

Product datasheet for TA355446

Bak (BAK1) Rabbit Polyclonal Antibody

Product data:

Product Type:	Primary Antibodies
Applications:	WB
Reactivity:	Human
Host:	Rabbit
Clonality:	Polyclonal
Specificity:	Expected reactivity: Horse, Human Homology: Horse: 80%; Human: 100%
Formulation:	Liquid. Purified antibody supplied in 1x PBS buffer with 0.09% (w/v) sodium azide and 2% sucrose.
Concentration:	lot specific
Purification:	Affinity Purified
Conjugation:	Unconjugated
Storage:	For short term use, store at 2-8°C up to 1 week. For long term storage, store at -20°C in small aliquots to prevent freeze-thaw cycles.
Stability:	Shelf life: one year from despatch.
Predicted Protein Size:	23kDa
Gene Name:	BCL2 antagonist/killer 1
Database Link:	NP_001179 Entrez Gene 578 Human Q16611
Background:	BAK1 belongs to the BCL2 protein family. BCL2 family members form oligomers or heterodimers and act as anti- or pro-apoptotic regulators that are involved in a wide variety of cellular activities. This protein localizes to mitochondria, and functions to induce apoptosis. It interacts with and accelerates the opening of the mitochondrial voltage-dependent anion channel, which leads to a loss in membrane potential and the release of cytochrome c. This protein also interacts with the tumor suppressor P53 after exposure to cell stress.
Synonyms:	BAK; BAK-LIKE; Bcl2-L-7; BCL2L7; CDN1; MGC3887; MGC117255
Protein Families:	Druggable Genome, Stem cell - Pluripotency, Transmembrane

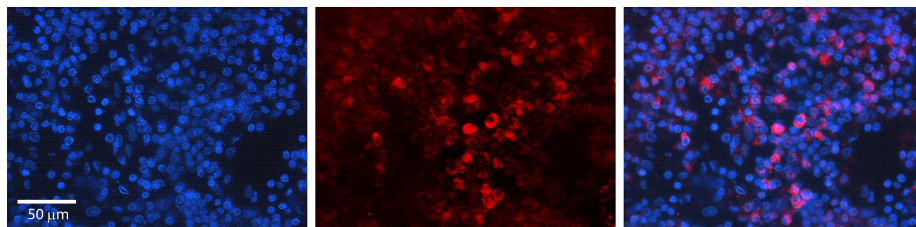


[View online »](#)

Product images:



WB Suggested Anti-BAK1 Antibody
Titration: 1.0 ug/ml
Positive Control: Fetal Heart



Rabbit Anti-BAK1 Antibody
Catalog Number: TA355446
Formalin Fixed Paraffin Embedded Tissue:
Human Lymph Node Tissue
Observed Staining: Cytoplasm
Primary Antibody Concentration: 1:100
Other Working Concentrations: N/A
Secondary Antibody: Donkey anti-Rabbit-Cy3
Secondary Antibody Concentration: 1:200
Magnification: 20X
Exposure Time: 0.5–2.0 sec