

Product datasheet for **TA355439**

Cdk5r1 Rabbit Polyclonal Antibody

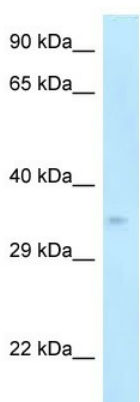
Product data:

| | |
|-------------------------|---|
| Product Type: | Primary Antibodies |
| Applications: | WB |
| Reactivity: | Human, Mouse |
| Host: | Rabbit |
| Clonality: | Polyclonal |
| Specificity: | Expected reactivity: Cow, Dog, Guinea Pig, Horse, Human, Mouse, Rat Homology: Cow: 100%; Dog: 100%; Guinea Pig: 100%; Horse: 100%; Human: 100%; Mouse: 100%; Rat: 100% |
| Formulation: | Liquid. Purified antibody supplied in 1x PBS buffer with 0.09% (w/v) sodium azide and 2% sucrose. <i>Note that this product is shipped as lyophilized powder to China customers.</i> |
| Concentration: | lot specific |
| Purification: | Affinity Purified |
| Conjugation: | Unconjugated |
| Storage: | For short term use, store at 2-8°C up to 1 week. For long term storage, store at -20°C in small aliquots to prevent freeze-thaw cycles. |
| Stability: | Shelf life: one year from despatch. |
| Predicted Protein Size: | 34kDa |
| Gene Name: | cyclin-dependent kinase 5, regulatory subunit 1 (p35) |
| Database Link: | NP_034001 Entrez Gene 8851 Human Entrez Gene 12569 Mouse P61809 |
| Background: | p35 is a neuron specific activator of CDK5. The complex p35/CDK5 is required for neurite outgrowth and cortical lamination. Cdk5r1 is an activator of TPKII. |
| Synonyms: | CDK5P35; CDK5R; MGC33831; NCK5A; p23; p25; p35; p35nck5a |

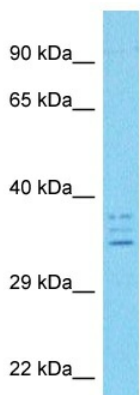


[View online »](#)

Product images:

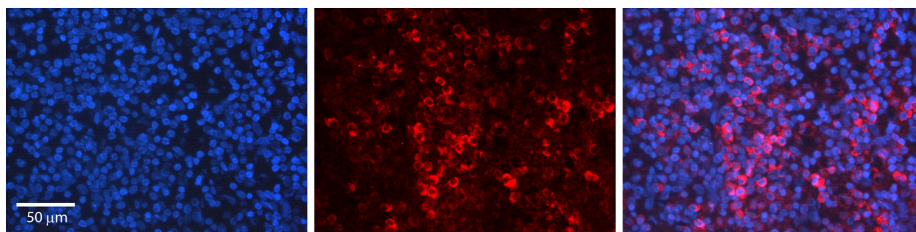


WB Suggested Anti-Cdk5r1 Antibody
Titration: 1.0 ug/ml
Positive Control: Mouse Pancreas



Host: Rabbit
Target Name: CDK5R1
Sample Type: Mouse Testis Lysate
Antibody Dilution: 1.0µg/ml

Host: Rabbit
Target Name: CDK5R1
Sample Tissue: Mouse Testis
Antibody Dilution: 1ug/ml



Rabbit Anti-CDK5R1 Antibody
Catalog Number: TA355439
Formalin Fixed Paraffin Embedded Tissue:
Human Lymph Node Tissue
Observed Staining: Cytoplasm
Primary Antibody Concentration: 1:600
Other Working Concentrations: N/A
Secondary Antibody: Donkey anti-Rabbit-Cy3
Secondary Antibody Concentration: 1:200
Magnification: 20X
Exposure Time: 0.5-2.0 sec