

Product datasheet for **TA355434**

Map3k9 Rabbit Polyclonal Antibody

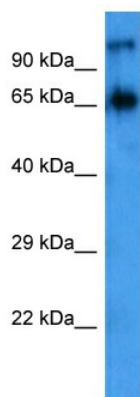
Product data:

Product Type:	Primary Antibodies
Applications:	WB
Reactivity:	Mouse
Host:	Rabbit
Clonality:	Polyclonal
Immunogen:	The immunogen is a synthetic peptide directed towards the C terminal region of mouse MAP3K9
Specificity:	Expected reactivity: Mouse
Formulation:	Liquid. Purified antibody supplied in 1x PBS buffer with 0.09% (w/v) sodium azide and 2% sucrose.
Concentration:	lot specific
Purification:	Affinity purified
Conjugation:	Unconjugated
Storage:	For short term use, store at 2-8°C up to 1 week. For long term storage, store at -20°C in small aliquots to prevent freeze-thaw cycles.
Stability:	Shelf life: one year from despatch.
Predicted Protein Size:	119 kDa
Gene Name:	mitogen-activated protein kinase kinase kinase 9
Database Link:	NP_001167578.1 Entrez Gene 338372 Mouse Q3U1V8
Synonyms:	MEKK9; MLK1; PRKE1



[View online »](#)

Product images:



Host: Rabbit
Target Name: Map3k9
Sample Type: HepG2 Cell Lysate
Antibody Dilution: 1.0µg/ml

Host: Rabbit
Target Name: MAP3K9
Sample Tissue: HepG2 Whole Cell lysates
Antibody Dilution: 1 ug/ml