

Product datasheet for **TA355433**

INPP1 Rabbit Polyclonal Antibody

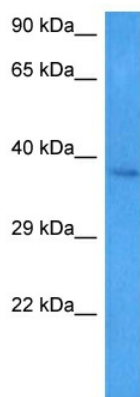
Product data:

Product Type:	Primary Antibodies
Applications:	WB
Reactivity:	Human
Host:	Rabbit
Clonality:	Polyclonal
Immunogen:	The immunogen is a synthetic peptide directed towards the middle region of human INPP1
Specificity:	Expected reactivity: Human
Formulation:	Liquid. Purified antibody supplied in 1x PBS buffer with 0.09% (w/v) sodium azide and 2% sucrose.
Concentration:	lot specific
Purification:	Affinity purified
Conjugation:	Unconjugated
Storage:	For short term use, store at 2-8°C up to 1 week. For long term storage, store at -20°C in small aliquots to prevent freeze-thaw cycles.
Stability:	Shelf life: one year from despatch.
Predicted Protein Size:	44 kDa
Gene Name:	inositol polyphosphate-1-phosphatase
Database Link:	NP_001122400.1 Entrez Gene 3628 Human P49441
Background:	This gene encodes the enzyme inositol polyphosphate-1-phosphatase, one of the enzymes involved in phosphatidylinositol signaling pathways. This enzyme removes the phosphate group at position 1 of the inositol ring from the polyphosphates inositol 1,4-bisphosphate and inositol 1,3,4-trisphosphate.
Synonyms:	IPP; IPPase; MGC110984
Protein Families:	Druggable Genome
Protein Pathways:	Inositol phosphate metabolism, Metabolic pathways, Phosphatidylinositol signaling system



[View online »](#)

Product images:



Host: Rabbit
Target Name: INPP1
Sample Type: OVCAR-3 Cell Lysate
Antibody Dilution: 1.0 μ g/ml

Host: Rabbit
Target Name: INPP1
Sample Tissue: OVCAR-3 Whole Cell lysates
Antibody Dilution: 1 μ g/ml