

## Product datasheet for **TA355427**

### TEX28 Rabbit Polyclonal Antibody

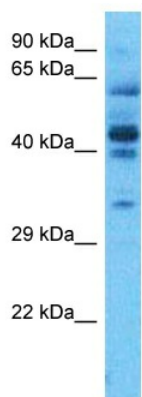
#### Product data:

Product Type:	Primary Antibodies
Applications:	WB
Reactivity:	Human
Host:	Rabbit
Clonality:	Polyclonal
Immunogen:	The immunogen for Anti-TEX28P2 antibody is: synthetic peptide directed towards the Middle region of Human TEX28
Specificity:	<b>Expected reactivity:</b> Human
Formulation:	Liquid. Purified antibody supplied in 1x PBS buffer with 0.09% (w/v) sodium azide and 2% sucrose.
Concentration:	lot specific
Purification:	Affinity purified
Conjugation:	Unconjugated
Storage:	For short term use, store at 2-8°C up to 1 week. For long term storage, store at -20°C in small aliquots to prevent freeze-thaw cycles.
Stability:	Shelf life: one year from despatch.
Predicted Protein Size:	46 kDa
Gene Name:	testis expressed 28
Database Link:	<a href="#">NP_001577.1</a> <a href="#">Entrez Gene 1527 Human</a> <a href="#">O15482</a>
Synonyms:	CXorf2; fTEX; TEX28P1; TEX28P2



[View online »](#)

Product images:



Host: Rabbit  
Target Name: TEX28  
Sample Tissue: Fetal Liver Lysate  
Antibody Dilution: 1.0µg/ml

Host: Rabbit  
Target Name: TEX28  
Sample Type: Fetal Liver  
Antibody Dilution: 1.0ug/ml