

Product datasheet for **TA355426**

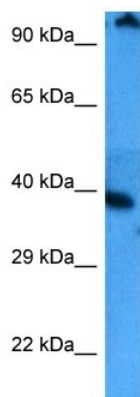
TSGA14 (CEP41) Rabbit Polyclonal Antibody

Product data:

| | |
|-------------------------|--|
| Product Type: | Primary Antibodies |
| Applications: | WB |
| Reactivity: | Human |
| Host: | Rabbit |
| Clonality: | Polyclonal |
| Immunogen: | The immunogen is a synthetic peptide directed towards the N terminal region of human CEP41 |
| Specificity: | Expected reactivity: Human |
| Formulation: | Liquid. Purified antibody supplied in 1x PBS buffer with 0.09% (w/v) sodium azide and 2% sucrose. |
| Concentration: | lot specific |
| Purification: | Affinity purified |
| Conjugation: | Unconjugated |
| Storage: | For short term use, store at 2-8°C up to 1 week. For long term storage, store at -20°C in small aliquots to prevent freeze-thaw cycles. |
| Stability: | Shelf life: one year from despatch. |
| Predicted Protein Size: | 41 kDa |
| Gene Name: | centrosomal protein 41 |
| Database Link: | NP_001244087.1 Entrez Gene 95681 Human Q9BYV8 |
| Background: | This gene encodes a centrosomal and microtubule-binding protein which is predicted to have two coiled-coil domains and a rhodanese domain. In human retinal pigment epithelial cells the protein localized to centrioles and cilia. Mutations in this gene have been associated with Joubert Syndrome 15; an autosomal recessive ciliopathy and neurological disorder. Alternative splicing results in multiple transcript variants. |
| Synonyms: | JBTS15; TSGA14 |
| Protein Families: | Druggable Genome |



[View online »](#)

Product images:


Host: Rabbit
 Target Name: CEP41
 Sample Type: MCF7 Cell Lysate
 Antibody Dilution: 1.0µg/ml

Host: Rabbit
 Target Name: CEP41
 Sample Tissue: MCF7 Whole Cell lysates
 Antibody Dilution: 1ug/ml