

Product datasheet for **TA355425**

MROH7 Rabbit Polyclonal Antibody

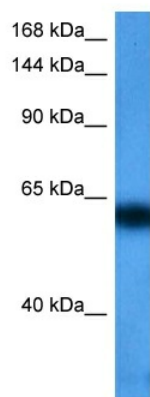
Product data:

Product Type:	Primary Antibodies
Applications:	WB
Reactivity:	Human
Host:	Rabbit
Clonality:	Polyclonal
Immunogen:	The immunogen is a synthetic peptide directed towards the middle region of human MROH7
Specificity:	Expected reactivity: Human
Formulation:	Liquid. Purified antibody supplied in 1x PBS buffer with 0.09% (w/v) sodium azide and 2% sucrose.
Concentration:	lot specific
Purification:	Affinity purified
Conjugation:	Unconjugated
Storage:	For short term use, store at 2-8°C up to 1 week. For long term storage, store at -20°C in small aliquots to prevent freeze-thaw cycles.
Stability:	Shelf life: one year from despatch.
Predicted Protein Size:	67 kDa
Gene Name:	maestro heat like repeat family member 7
Database Link:	NP_001034553.2 Entrez Gene 374977 Human Q68CQ1-8
Synonyms:	Heatr8; RGD1563440



[View online »](#)

Product images:



Host: Rabbit
Target Name: C1orf175
Sample Type: U937 Cell Lysate
Antibody Dilution: 1.0 μ g/ml

Host: Rabbit
Target Name: C1ORF175
Sample Tissue: U937 Whole Cell lysates
Antibody Dilution: 1 μ g/ml