

## Product datasheet for **TA355424**

### GGTLC1 Rabbit Polyclonal Antibody

#### Product data:

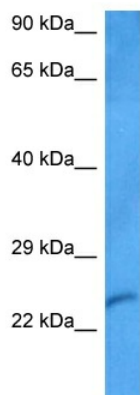
Product Type:	Primary Antibodies
Applications:	WB
Reactivity:	Human
Host:	Rabbit
Clonality:	Polyclonal
Immunogen:	The immunogen is a synthetic peptide directed towards the C terminal region of human GGTLC1
Specificity:	<b>Expected reactivity:</b> Human
Formulation:	Liquid. Purified antibody supplied in 1x PBS buffer with 0.09% (w/v) sodium azide and 2% sucrose.
Concentration:	lot specific
Purification:	Affinity purified
Conjugation:	Unconjugated
Storage:	For short term use, store at 2-8°C up to 1 week. For long term storage, store at -20°C in small aliquots to prevent freeze-thaw cycles.
Stability:	Shelf life: one year from despatch.
Predicted Protein Size:	24 kDa
Gene Name:	gamma-glutamyltransferase light chain 1
Database Link:	<a href="#">NP_842563.1</a> <a href="#">Entrez Gene 92086 Human</a> <a href="#">Q9BX51</a>
Background:	This gene encodes a member of the gamma-glutamyl transpeptidase (GGT) family, which are important in the metabolism of glutathione. The most ubiquitously expressed human GGT gene, GGT1, encodes a single transmembrane polypeptide that is post-translationally processed to form a heavy and a light chain. In contrast, the product of this gene only contains homology to the light chain region, and lacks a transmembrane domain. Multiple alternatively spliced variants, encoding the same protein, have been identified.



[View online »](#)

**Synonyms:** dj831C21.1; dj831C21.2; gamma-glutamyltranspeptidase-like; GGTL6; GGTLA3; GGTLA4; MGC50550; OTTHUMP00000030455

## Product images:



Host: Rabbit  
Target Name: GGTL1  
Sample Type: HepG2 Cell Lysate  
Antibody Dilution: 1.0µg/ml

Host: Rabbit  
Target Name: GGTL1  
Sample Tissue: HepG2 Whole Cell lysates  
Antibody Dilution: 1ug/ml