

Product datasheet for **TA355423**

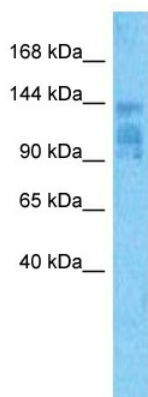
ErbB2 Rabbit Polyclonal Antibody

Product data:

Product Type:	Primary Antibodies
Applications:	WB
Reactivity:	Human, Mouse
Host:	Rabbit
Clonality:	Polyclonal
Immunogen:	The immunogen is a synthetic peptide directed towards the Middle region of Mouse ERBB2
Specificity:	Expected reactivity: Mouse
Formulation:	Liquid. Purified antibody supplied in 1x PBS buffer with 0.09% (w/v) sodium azide and 2% sucrose.
Concentration:	lot specific
Purification:	Affinity purified
Conjugation:	Unconjugated
Storage:	For short term use, store at 2-8°C up to 1 week. For long term storage, store at -20°C in small aliquots to prevent freeze-thaw cycles.
Stability:	Shelf life: one year from despatch.
Predicted Protein Size:	138 kDa
Gene Name:	erb-b2 receptor tyrosine kinase 2
Database Link:	NP_001003817.1 Entrez Gene 13866 Mouse P70424
Background:	Essential component of a neuregulin-receptor complex, although neuregulins do not interact with it alone. GP30 is a potential ligand for this receptor. Binds to the 5'-TCAAATTC-3' sequence in the MT-CO2 promoter and activates its transcription (By similarity).
Synonyms:	C-erbB-2; CD340; erbB-2; HER-2; HER-2/neu; HER2; herstatin; NEU; NGL; p185erbB2; TKR1

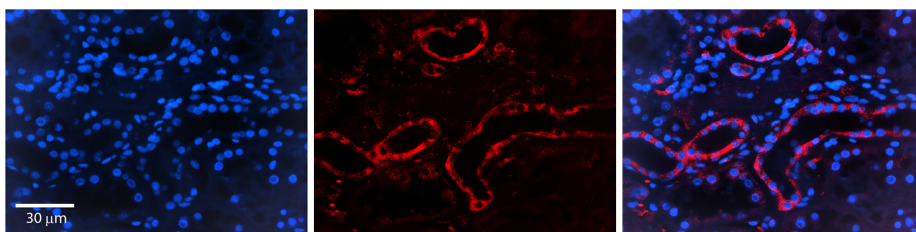


[View online »](#)

Product images:


Host: Rabbit
 Target Name: ERBB2
 Sample Tissue: Mouse Brain Lysate
 Antibody Dilution: 1.0µg/ml

Host: Rabbit
 Target Name: ERBB2
 Sample Type: Mouse Brain
 Antibody Dilution: 1.0ug/ml



Rabbit Anti-ERBB2 Antibody
 Catalog Number: TA355423
 Formalin Fixed Paraffin Embedded Tissue:
 Human Kidney Tissue
 Observed Staining: Cytoplasm
 Primary Antibody Concentration: 1:100
 Other Working Concentrations: N/A
 Secondary Antibody: Donkey anti-Rabbit-Cy3
 Secondary Antibody Concentration: 1:200
 Magnification: 20X
 Exposure Time: 0.5–2.0 sec