

Product datasheet for **TA355421**

C10orf137 (EDRF1) Rabbit Polyclonal Antibody

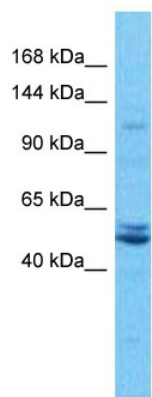
Product data:

Product Type:	Primary Antibodies
Applications:	WB
Reactivity:	Human
Host:	Rabbit
Clonality:	Polyclonal
Immunogen:	The immunogen for Anti-EDRF1 antibody is: synthetic peptide directed towards the Middle region of Human C10orf137
Specificity:	Expected reactivity: Human
Formulation:	Liquid. Purified antibody supplied in 1x PBS buffer with 0.09% (w/v) sodium azide and 2% sucrose.
Concentration:	lot specific
Purification:	Affinity purified
Conjugation:	Unconjugated
Storage:	For short term use, store at 2-8°C up to 1 week. For long term storage, store at -20°C in small aliquots to prevent freeze-thaw cycles.
Stability:	Shelf life: one year from despatch.
Predicted Protein Size:	135 kDa
Gene Name:	erythroid differentiation regulatory factor 1
Database Link:	Entrez Gene 26098 Human Q3B7T1
Background:	This gene may play a role in erythroid cell differentiation. The encoded protein inhibits DNA binding of the erythroid transcription factor GATA-1 and may regulate the expression of alpha-globin and gamma-globin. Alternative splicing results in multiple transcript variants.



[View online »](#)

Product images:



Host: Rabbit
Target Name: C10orf137
Sample Tissue: MCF7 Cell Lysate
Antibody Dilution: 1.0 μ g/ml

Host: Rabbit
Target Name: C10orf137
Sample Type: MCF7 Whole Cell
Antibody Dilution: 1.0 μ g/ml