

Product datasheet for **TA355415**

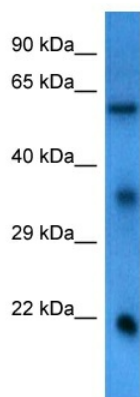
KIAA0895 Rabbit Polyclonal Antibody

Product data:

Product Type:	Primary Antibodies
Applications:	WB
Reactivity:	Human
Host:	Rabbit
Clonality:	Polyclonal
Immunogen:	The immunogen is a synthetic peptide directed towards the N terminal region of human KIAA0895
Specificity:	Expected reactivity: Human
Formulation:	Liquid. Purified antibody supplied in 1x PBS buffer with 0.09% (w/v) sodium azide and 2% sucrose.
Concentration:	lot specific
Purification:	Affinity purified
Conjugation:	Unconjugated
Storage:	For short term use, store at 2-8°C up to 1 week. For long term storage, store at -20°C in small aliquots to prevent freeze-thaw cycles.
Stability:	Shelf life: one year from despatch.
Predicted Protein Size:	61 kDa
Gene Name:	KIAA0895
Database Link:	NP_001093895.1 Entrez Gene 23366 Human Q8NCT3
Synonyms:	KIAA0895



[View online »](#)

Product images:


Host: Rabbit
 Target Name: KIAA0895
 Sample Type: 721_B Cell Lysate
 Antibody Dilution: 1.0µg/ml

Host: Rabbit
 Target Name: KIAA0895
 Sample Tissue: 721_B lymphoblast Whole Cell lysates
 Antibody Dilution: 1ug/ml