

Product datasheet for **TA355414**

PIP5KI gamma (PIP5K1C) Rabbit Polyclonal Antibody

Product data:

Product Type:	Primary Antibodies
Applications:	WB
Reactivity:	Human
Host:	Rabbit
Clonality:	Polyclonal
Immunogen:	The immunogen is a synthetic peptide directed towards the C terminal region of human PIP5K1C
Specificity:	Expected reactivity: Human
Formulation:	Liquid. Purified antibody supplied in 1x PBS buffer with 0.09% (w/v) sodium azide and 2% sucrose.
Concentration:	lot specific
Purification:	Affinity purified
Conjugation:	Unconjugated
Storage:	For short term use, store at 2-8°C up to 1 week. For long term storage, store at -20°C in small aliquots to prevent freeze-thaw cycles.
Stability:	Shelf life: one year from despatch.
Predicted Protein Size:	73 kDa
Gene Name:	phosphatidylinositol-4-phosphate 5-kinase type 1 gamma
Database Link:	NP_001182662.1 Entrez Gene 23396 Human O60331
Background:	This locus encodes a type I phosphatidylinositol 4-phosphate 5-kinase. The encoded protein catalyzes phosphorylation of phosphatidylinositol 4-phosphate, producing phosphatidylinositol 4,5-bisphosphate. This enzyme is found at synapses and has been found to play roles in endocytosis and cell migration. Mutations at this locus have been associated with lethal congenital contractural syndrome. Alternatively spliced transcript variants encoding different isoforms have been described.



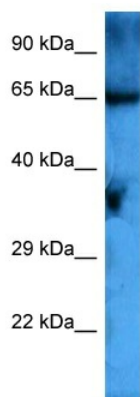
[View online »](#)

Synonyms: KIAA0589; LCCS3; PIP5K-GAMMA; PIP5Kgamma; PIP5Klgamma; PIPKIg_v4; PtdIns(4)P-5-kinase; PtdInsPKIgamma

Protein Families: Druggable Genome

Protein Pathways: Endocytosis, Fc gamma R-mediated phagocytosis, Focal adhesion, Inositol phosphate metabolism, Metabolic pathways, Phosphatidylinositol signaling system, Regulation of actin cytoskeleton

Product images:



Host: Rabbit
Target Name: PIP5K1C
Sample Type: HepG2 Cell Lysate
Antibody Dilution: 1.0µg/ml

Host: Rabbit
Target Name: PIP5K1C
Sample Tissue: HepG2 Whole Cell lysates
Antibody Dilution: 1ug/ml