

Product datasheet for **TA355409**

PCDHB6 Rabbit Polyclonal Antibody

Product data:

Product Type:	Primary Antibodies
Applications:	WB
Reactivity:	Human
Host:	Rabbit
Clonality:	Polyclonal
Immunogen:	The immunogen is a synthetic peptide directed towards the N terminal region of human PCDHB6
Specificity:	Expected reactivity: Human
Formulation:	Liquid. Purified antibody supplied in 1x PBS buffer with 0.09% (w/v) sodium azide and 2% sucrose.
Concentration:	lot specific
Purification:	Affinity purified
Conjugation:	Unconjugated
Storage:	For short term use, store at 2-8°C up to 1 week. For long term storage, store at -20°C in small aliquots to prevent freeze-thaw cycles.
Stability:	Shelf life: one year from despatch.
Predicted Protein Size:	84 kDa
Gene Name:	protocadherin beta 6
Database Link:	NP_001290074.1 Entrez Gene 56130 Human Q9Y5E3
Background:	This gene is a member of the protocadherin beta gene cluster, one of three related gene clusters tandemly linked on chromosome five. The gene clusters demonstrate an unusual genomic organization similar to that of B-cell and T-cell receptor gene clusters. Unlike the alpha and gamma clusters, the transcripts from these genes do not share common 3' exons. These neural cadherin-like cell adhesion proteins are integral plasma membrane proteins that most likely play a critical role in the establishment and function of specific cell-cell neural connections. Alternative splicing results in multiple transcript variants.

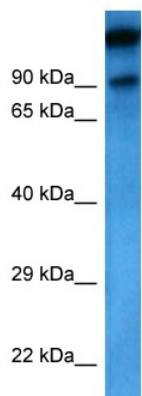


[View online »](#)

Synonyms: PCDH-beta-6; PCDH-BETA6

Protein Families: Transmembrane

Product images:



Host: Rabbit
Target Name: PCDHB6
Sample Type: THP-1 Cell Lysate
Antibody Dilution: 1.0 μ g/ml

Host: Rabbit
Target Name: PCDHB6
Sample Tissue: THP-1 Whole Cell lysates
Antibody Dilution: 1 μ g/ml