

## Product datasheet for **TA355407**

### GFM1 Rabbit Polyclonal Antibody

#### Product data:

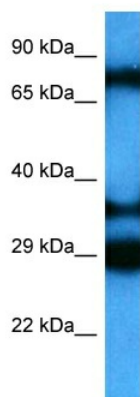
|                         |   |
|-------------------------|---|
| Product Type:           | Primary Antibodies  |
| Applications:           | WB  |
| Reactivity:             | Human   |
| Host:                   | Rabbit  |
| Clonality:              | Polyclonal  |
| Immunogen:              | The immunogen is a synthetic peptide directed towards the C terminal region of human GFM1   |
| Specificity:            | <b>Expected reactivity:</b> Human   |
| Formulation:            | Liquid. Purified antibody supplied in 1x PBS buffer with 0.09% (w/v) sodium azide and 2% sucrose.   |
| Concentration:          | lot specific  |
| Purification:           | Affinity purified   |
| Conjugation:            | Unconjugated  |
| Storage:                | For short term use, store at 2-8°C up to 1 week. For long term storage, store at -20°C in small aliquots to prevent freeze-thaw cycles.   |
| Stability:              | Shelf life: one year from despatch.   |
| Predicted Protein Size: | 83 kDa  |
| Gene Name:              | G elongation factor, mitochondrial 1  |
| Database Link:          | <a href="#">NP_001295093.1</a><br><a href="#">Entrez Gene 85476 Human</a><br><a href="#">Q96RP9</a>   |
| Background:             | Eukaryotes contain two protein translational systems, one in the cytoplasm and one in the mitochondria. Mitochondrial translation is crucial for maintaining mitochondrial function and mutations in this system lead to a breakdown in the respiratory chain-oxidative phosphorylation system and to impaired maintenance of mitochondrial DNA. This gene encodes one of the mitochondrial translation elongation factors. Its role in the regulation of normal mitochondrial function and in different disease states attributed to mitochondrial dysfunction is not known. |



[View online »](#)

Synonyms: COXPD1; EF-Gmt; EFG; EFG1; EFGM; EGF1; FLJ12662; FLJ13632; FLJ20773; GFM; hEFG1

### Product images:



Host: Rabbit  
Target Name: GFM1  
Sample Type: ACHN Cell Lysate  
Antibody Dilution: 1.0 $\mu$ g/ml

Host: Rabbit  
Target Name: GFM1  
Sample Tissue: ACHN Whole Cell lysates  
Antibody Dilution: 1 $\mu$ g/ml