

Product datasheet for **TA355392**

SERPINI2 Mouse Monoclonal Antibody [Clone ID: 7H7]

Product data:

Product Type:	Primary Antibodies
Clone Name:	7H7
Applications:	WB
Reactivity:	Human
Host:	Mouse
Isotype:	IgM
Clonality:	Monoclonal
Specificity:	Expected reactivity: Human
Formulation:	Liquid. Purified antibody supplied in 1x PBS buffer with 0.09% (w/v) sodium azide and 2% sucrose.
Concentration:	lot specific
Conjugation:	Unconjugated
Storage:	For short term use, store at 2-8°C up to 1 week. For long term storage, store at -20°C in small aliquots to prevent freeze-thaw cycles.
Stability:	Shelf life: one year from despatch.
Predicted Protein Size:	46
Gene Name:	serpin family I member 2
Database Link:	NP_006208 Entrez Gene 5276 Human O75830
Background:	The protein encoded by this gene is a member of the serine protease inhibitor (serpin) superfamily made up of proteins which play central roles in the regulation of a wide variety of physiological processes, including coagulation, fibrinolysis, development, malignancy and inflammation. The gene product may have a role in a growth-control, possibly growth-suppressing pathway and, when impaired, may be involved in pancreatic carcinogenesis. The protein is a member of the plasminogen activator inhibitor-1 family, a subset of the serpin superfamily whose members act as tissue-specific tPA inhibitors. Two alternatively spliced transcript variants encoding distinct protein isoforms have been found for this gene.

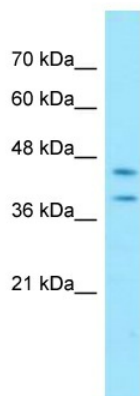


[View online »](#)

Synonyms: MEPI; pancpin; PI14; TSA2004

Protein Families: Druggable Genome, Secreted Protein

Product images:



Mouse Anti-SERPINI2
Monoclonal Antibody
Catalog Number: AMM11299A
Lot Number: MM0132
Clone Number: 7H7
Lane: MCF7 Cell Lysate
Antibody Titration: 5.0µg/ml
Gel Concentration: 12%

WB Suggested Anti-SERPINI2 Antibody
Titration: 5 ug/ml
Positive Control: MCF7 Whole Cell