

Product datasheet for **TA355353**

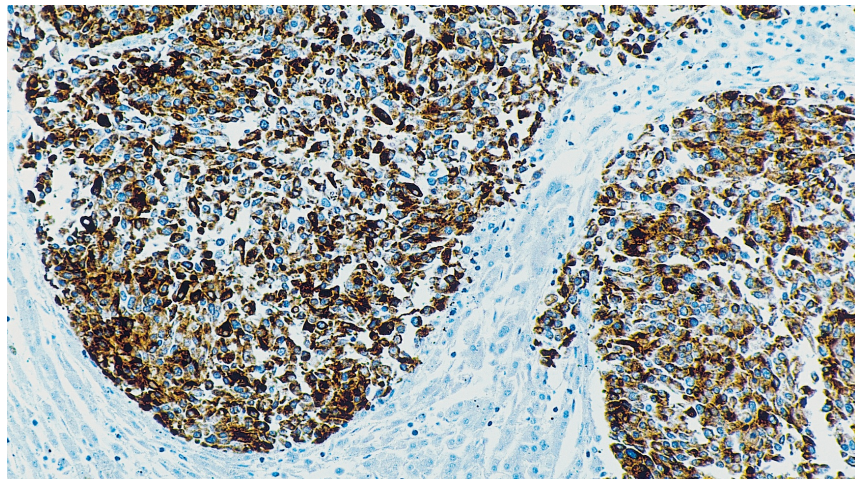
PSMA (FOLH1) Mouse Monoclonal Antibody [Clone ID: 1D6]

Product data:

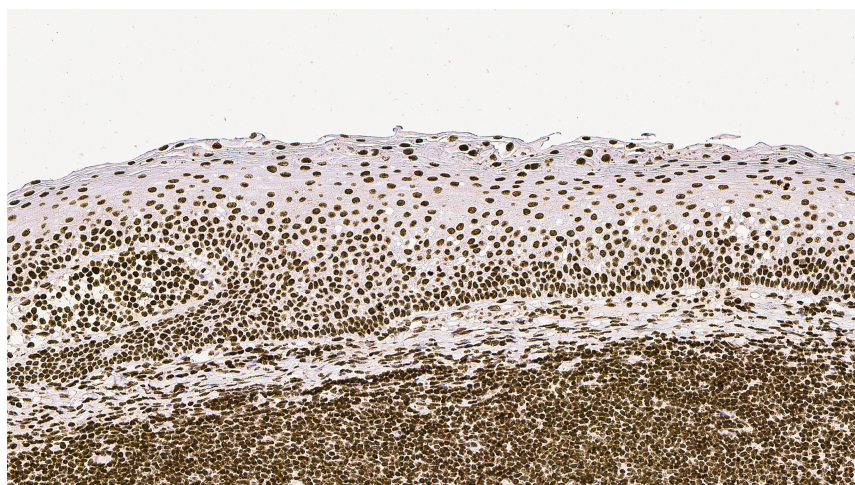
Product Type:	Primary Antibodies
Clone Name:	1D6
Applications:	IHC
Recommended Dilution:	1:100
Reactivity:	Human
Host:	Mouse
Isotype:	IgG2b
Clonality:	Monoclonal
Immunogen:	Prokaryotic recombinant protein corresponding to a region within the middle of the topoisomerase I molecule
Specificity:	Human topoisomerase I
Formulation:	Liquid tissue culture supernatant containing sodium azide as a preservative
Conjugation:	Unconjugated
Storage:	Store at 2-8°C
Stability:	12 months
Gene Name:	folate hydrolase (prostate-specific membrane antigen) 1
Database Link:	Entrez Gene 2346 Human Q04609
Background:	The prostate specific membrane antigen (PSMA) is expressed as a 750 amino acid glycoprotein but may also be found as PSM, a form of the protein missing the first 57 amino acids. PSMA has two enzymatic activities, one as a prostate-specific integral membrane folate hydrolase and the other as a carboxypeptidase. Reports suggest that PSMA expression may correlate with tumor burden and serve as an indicator of metastatic involvement. The cellular localization of PSMA contrasts with that of prostate specific antigen (PSA) and prostatic acid phosphatase (PAP) that are secreted proteins.
Synonyms:	FGCP; FOLH; GCP2; GCPII; mGCP; NAALAD1; NAALAdase; PSM; PSMA



[View online »](#)

Product images:

Human prostate: immunohistochemical staining for Prostate Specific Membrane Antigen (PSMA): clone 1D6



Human prostate: immunohistochemical staining for Prostate Specific Membrane Antigen (PSMA): clone 1D6