

Product datasheet for **TA355348**

Synaptophysin (SYP) Mouse Monoclonal Antibody [Clone ID: 27G12]

Product data:

Product Type:	Primary Antibodies
Clone Name:	27G12
Applications:	IHC
Recommended Dilution:	1:200
Reactivity:	Human
Host:	Mouse
Isotype:	IgG1
Clonality:	Monoclonal
Immunogen:	Synthetic peptide corresponding to a region near to the C-terminal region of the synaptophysin molecule
Specificity:	Human synaptophysin
Formulation:	Liquid tissue culture supernatant containing sodium azide as a preservative
Conjugation:	Unconjugated
Storage:	Store at 2-8°C
Stability:	12 months
Gene Name:	synaptophysin
Database Link:	Entrez Gene 6855 Human P08247



[View online »](#)

Background:

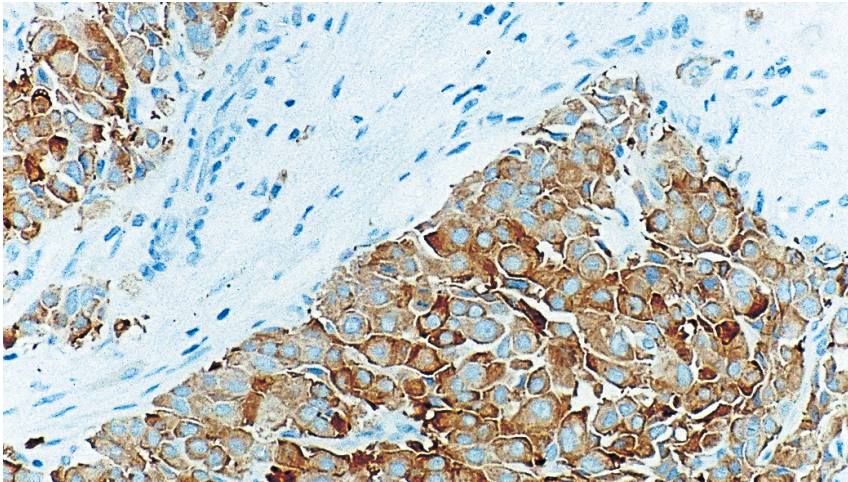
Synaptophysin is an integral membrane glycoprotein with a molecular weight of 38 kD. It is reported to occur in presynaptic vesicles of neurons in brain, spinal cord, retina, in similar vesicles of the adrenal medulla as well as in neuromuscular junctions.

Synaptophysin may be involved in synaptic vesicle formation and exocytosis. Synaptophysin is reported to be expressed in a wide spectrum of neuroendocrine tumors including neuroblastomas, ganglioneuroblastomas, pheochromocytomas, chromaffin and non-chromaffin paragangliomas.

Synaptophysin is also reported to be expressed in neuroendocrine tumors of epithelial type including pituitary adenomas, islet cell tumors, medullary carcinomas of thyroid, parathyroid adenomas, carcinoids of the bronchopulmonary and gastrointestinal tracts, neuroendocrine carcinomas of the bronchopulmonary and gastrointestinal tract and neuronendocrine carcinomas of the skin.

Synonyms:

MRX; MRXSYP; synaptophysin

Product images:

Breast carcinoma showing neuroendocrine differentiation: immunohistochemical staining for Synaptophysin. Note cytoplasmic staining of tumor cells. Synaptophysin: clone 27G12