

Product datasheet for **TA355344**

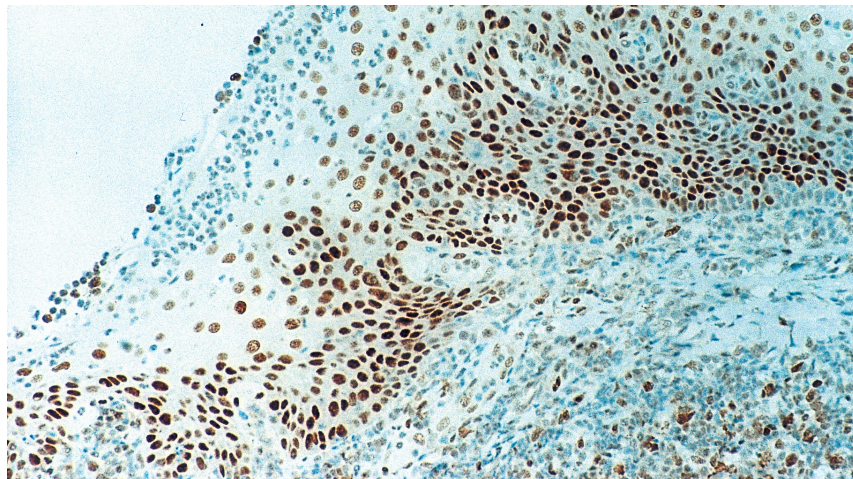
Rb (RB1) Mouse Monoclonal Antibody [Clone ID: 13A10]

Product data:

| | |
|-----------------------|---|
| Product Type: | Primary Antibodies |
| Clone Name: | 13A10 |
| Applications: | IHC, WB |
| Recommended Dilution: | IHC: 1:25 - 1:50 WB: 1:250 |
| Reactivity: | Human |
| Host: | Mouse |
| Isotype: | IgG1 |
| Clonality: | Monoclonal |
| Immunogen: | Recombinant prokaryotic protein corresponding to a portion of the N-terminal region of the retinoblastoma gene product |
| Specificity: | Human retinoblastoma gene protein (105 kD) |
| Formulation: | Liquid tissue culture supernatant containing 15 mM sodium azide as a preservative |
| Conjugation: | Unconjugated |
| Storage: | Store at 2-8°C |
| Stability: | 12 months |
| Gene Name: | RB transcriptional corepressor 1 |
| Database Link: | Entrez Gene 5925 Human P06400 |
| Background: | Retinoblastoma (Rb) is a rare tumor of the retina associated with mutations of chromosome 13. The nuclear phosphoprotein encoded by the Rb tumor suppressor gene is present in many cells and may indirectly regulate cell growth by activating the transcription factor ATF-2. Activation of ATF-2 initiates expression of TGF-beta2, which in turn inhibits transcription of genes affecting cell growth. Bilateral mutation of the Rb gene may potentially play a role in the development of a number of malignant tumors. |
| Synonyms: | OSRC; osteosarcoma; p105-Rb; pp110; pRb; RB |



[View online »](#)

Product images:

Human tonsil: immunohistochemical staining for Retinoblastoma Gene Protein. Retinoblastoma Gene Protein: clone 13A10