

## Product datasheet for **TA355343**

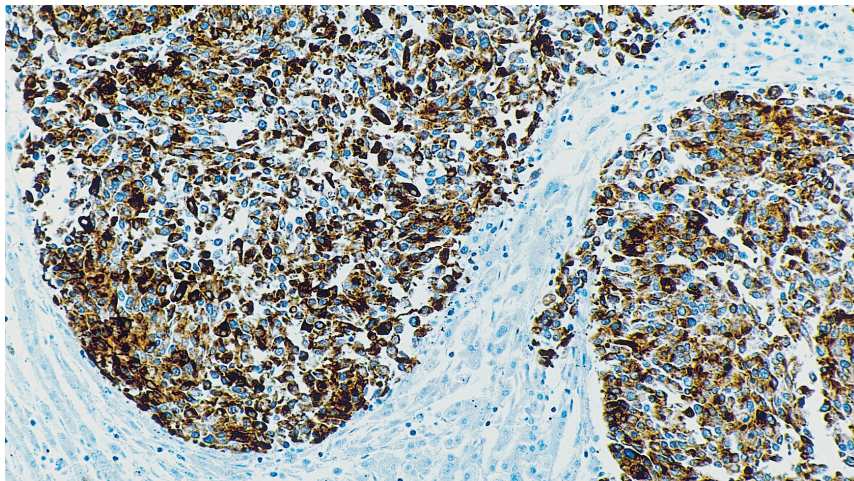
### PSMA (FOLH1) Mouse Monoclonal Antibody [Clone ID: 1D6]

#### Product data:

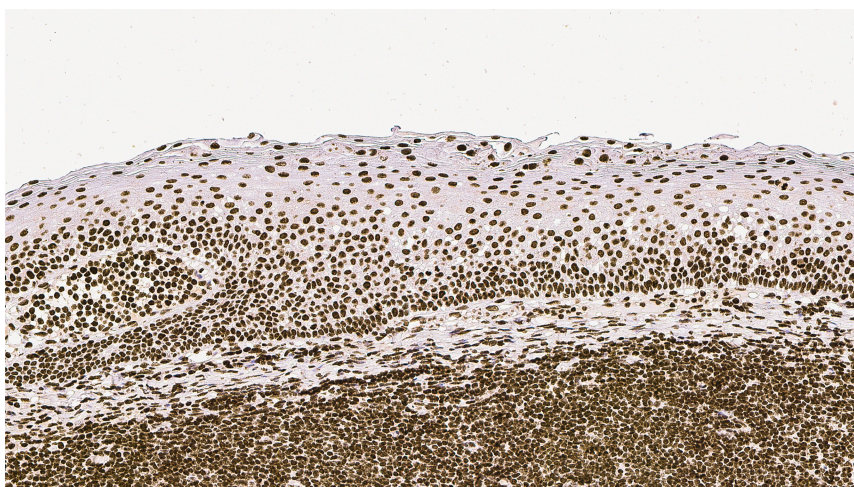
Product Type:	Primary Antibodies
Clone Name:	1D6
Applications:	IHC
Recommended Dilution:	1:50
Reactivity:	Human
Host:	Mouse
Isotype:	IgG1
Clonality:	Monoclonal
Immunogen:	Expressed from a 108 amino acid region of the extra cellular domain (301-409aa) of the human PSMA molecule
Specificity:	Human prostate specific membrane antigen
Formulation:	Liquid tissue culture supernatant containing 15 mM sodium azide as a preservative
Conjugation:	Unconjugated
Storage:	Store at 2-8°C
Stability:	12 months
Gene Name:	folate hydrolase (prostate-specific membrane antigen) 1
Database Link:	<a href="#">Entrez Gene 2346 Human Q04609</a>
Background:	The prostate specific membrane antigen (PSMA) is expressed as a 750 amino acid glycoprotein but may also be found as PSM, a form of the protein missing the first 57 amino acids. PSMA has two enzymatic activities, one as a prostate-specific integral membrane folate hydrolase and the other as a carboxypeptidase. Reports suggest that PSMA expression may correlate with tumor burden and serve as an indicator of metastatic involvement. The cellular localization of PSMA contrasts with that of prostate specific antigen (PSA) and prostatic acid phosphatase (PAP) that are secreted proteins.
Synonyms:	FGCP; FOLH; GCP2; GCPII; mGCP; NAALAD1; NAALAdase; PSM; PSMA



[View online »](#)

**Product images:**

Human prostate: immunohistochemical staining for Prostate Specific Membrane Antigen (PSMA): clone 1D6



Human prostate: immunohistochemical staining for Prostate Specific Membrane Antigen (PSMA): clone 1D6