

Product datasheet for **TA355334**

Alkaline Phosphatase (ALPP) Mouse Monoclonal Antibody [Clone ID: 8A9]

Product data:

Product Type:	Primary Antibodies
Clone Name:	8A9
Applications:	IHC
Recommended Dilution:	1:50
Reactivity:	Human
Host:	Mouse
Isotype:	IgG1
Clonality:	Monoclonal
Immunogen:	Purified human placental alkaline phosphatase
Specificity:	Human placental alkaline phosphatase (PLAP). Immunohistochemical evidence (in house and published) supports reactivity with PLAP and also with PLAP-like enzyme
Formulation:	Liquid tissue culture supernatant containing sodium azide as a preservative
Conjugation:	Unconjugated
Storage:	Store at 2-8°C
Stability:	12 months
Gene Name:	alkaline phosphatase, placental
Database Link:	Entrez Gene 250 Human P05187



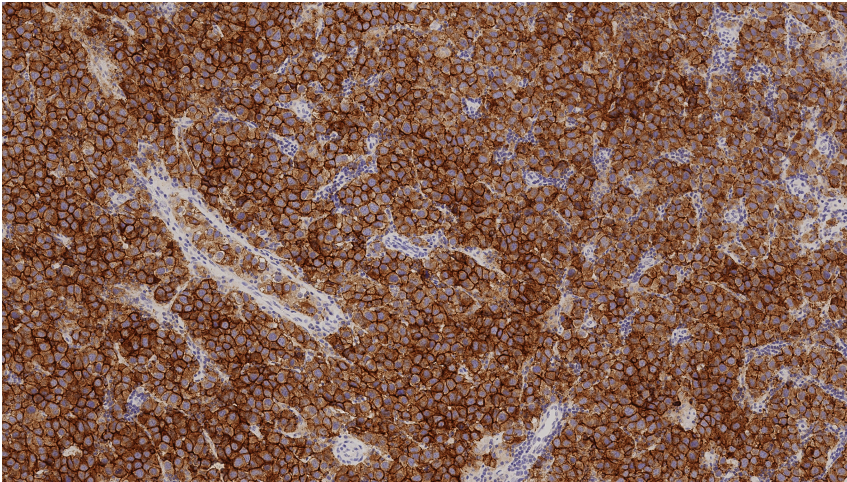
[View online »](#)

Background:

Placental alkaline phosphatase (PLAP) is a membrane-associated sialoglycoprotein enzyme normally present at high concentration in syncytiotrophoblasts within the placenta during the third trimester of gestation. The expression of PLAP was originally thought to be restricted to term placenta but a human PLAP-like variant has been described which shares more than 85% homology with PLAP itself. This high degree of homology between PLAP and PLAP-like enzyme together with cross-reacting antibodies has led to some confusion of the distribution of PLAP and PLAP-like enzyme in various tissues. PLAP is reported to be expressed only in normal term placenta, endocervix and fallopian tube and also in ovarian and proximal gastrointestinal tumors. PLAP expression is rare in malignant germ cell tumors. PLAP-like enzyme is reported to be predominantly found in normal fetal and neonatal testis, and in thymus. It is also commonly expressed in germ cell tumors and more recently described in seminomas.

Synonyms:

ALP; FLJ61142; glycerophosphatase; PALP; PLAP; PLAP-1

Product images:

Human seminoma: immunohistochemical staining of Placental Alkaline Phosphatase. Placental Alkaline Phosphatase (PLAP): clone 8A9