

Product datasheet for **TA355331**

Parathyroid Hormone (PTH) Mouse Monoclonal Antibody [Clone ID: 105G7]

Product data:

Product Type:	Primary Antibodies
Clone Name:	105G7
Applications:	IHC
Recommended Dilution:	1:300
Reactivity:	Human
Host:	Mouse
Isotype:	IgG2a
Clonality:	Monoclonal
Immunogen:	Prokaryotic recombinant protein corresponding to the entire human parathyroid hormone molecule
Specificity:	Human parathyroid hormone
Formulation:	Liquid tissue culture supernatant containing sodium azide as a preservative
Conjugation:	Unconjugated
Storage:	Store at 2-8°C
Stability:	12 months
Gene Name:	parathyroid hormone
Database Link:	Entrez Gene 5741 Human P01270



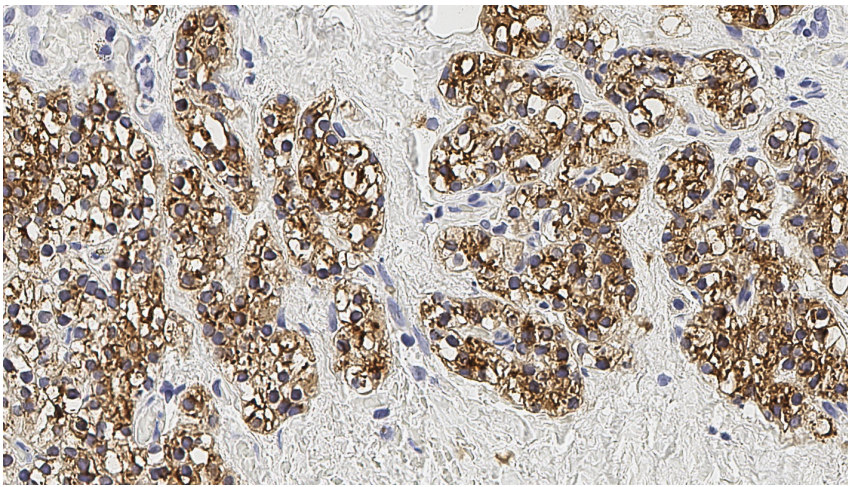
[View online »](#)

Background:

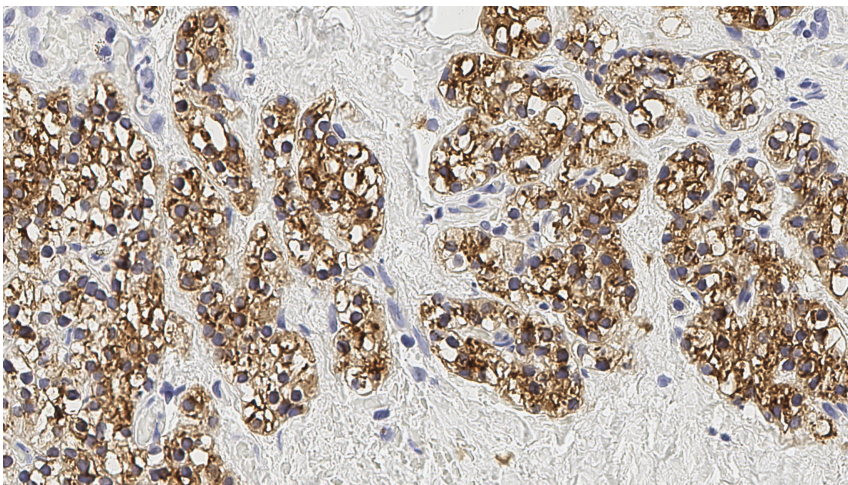
The parathyroid glands are small, oval, endocrine glands closely associated with the thyroid gland. The parathyroid glands regulate serum calcium and phosphate levels via parathyroid hormone (parathormone). Parathyroid hormone raises serum calcium levels directly, by increasing the rate of osteoclastic reabsorption and promoting breakdown of the bone matrix, and indirectly, by increasing the renal tubular reabsorption of calcium ions and inhibiting the reabsorption of phosphate ions from the glomerular filtrate, and finally, by promoting the absorption of calcium from the small intestine. Parathyroid hormone is the most important regulator of blood calcium levels and is essential to life, whereas calcitonin appears only to provide a complementary mechanism for fine adjustment. Chief cells are the most abundant cells in the parathyroid gland and are responsible for the secretion of parathyroid hormone.

Synonyms:

parathormone; Parathyrin; PTH1

Product images:

Human parathyroid adenoma:
immunohistochemical staining for Parathyroid
Hormone. Parathyroid Hormone: clone 105G7



Human parathyroid adenoma:
immunohistochemical staining for Parathyroid
Hormone. Parathyroid Hormone: clone 105G7