

Product datasheet for **TA355328**

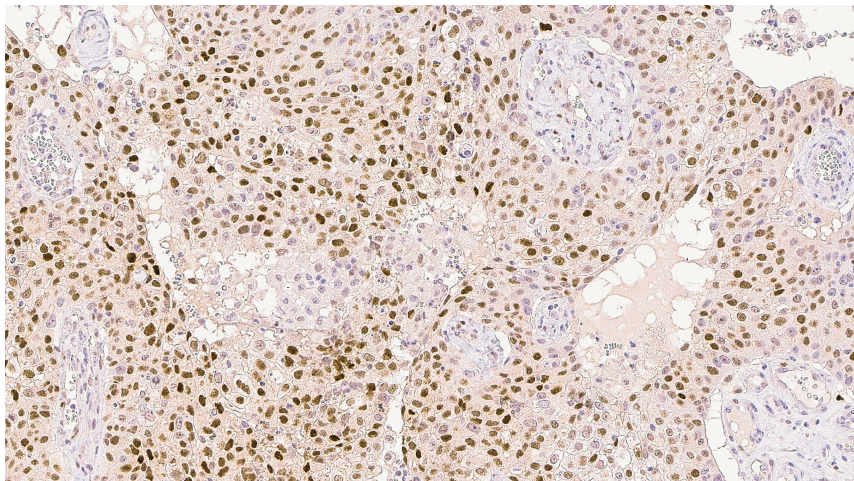
p21 (CDKN1A) Mouse Monoclonal Antibody [Clone ID: 4D10]

Product data:

Product Type:	Primary Antibodies
Clone Name:	4D10
Applications:	IHC
Recommended Dilution:	1:20 - 1:40
Reactivity:	Human
Host:	Mouse
Isotype:	IgG1
Clonality:	Monoclonal
Immunogen:	Prokaryotic recombinant fusion protein corresponding to the full length WAF1 molecule
Specificity:	Human WAF1 protein. (Also referred to as p21, Cip1 and sdi1 protein)
Formulation:	Liquid tissue culture supernatant containing 15 mM sodium azide as a preservative
Conjugation:	Unconjugated
Storage:	Store at 2-8°C
Stability:	12 months
Gene Name:	cyclin-dependent kinase inhibitor 1A
Database Link:	Entrez Gene 1026 Human P38936
Background:	The gene encoding WAF1, also termed p21, is transcriptionally regulated by the suppressor protein, p53. Overexpression of WAF1 is growth suppressive, possibly by inhibiting the activity of cyclin/CDK complexes. One consequence of WAF1 binding to cyclin/CDK complexes is the inhibition of Rb protein phosphorylation. Induction of WAF1 expression requires wild type p53 activity in cells undergoing p53 dependent G1 arrest or apoptosis. Mutation of the p53 gene is a common event in human cancer and results in the failure to produce WAF1. The effect of this may lead to uncontrolled cell proliferation.
Synonyms:	CAP20; CDKN1; CIP1; MDA-6; MDA6; OTTHUMP00000016298; P21; p21CIP1; p21Cip1/Waf1; PIC1; SDI1; WAF1



[View online »](#)

Product images:

Squamous cell carcinoma: immunohistochemical staining of p21(WAF1): clone 4D10