

Product datasheet for **TA355326**

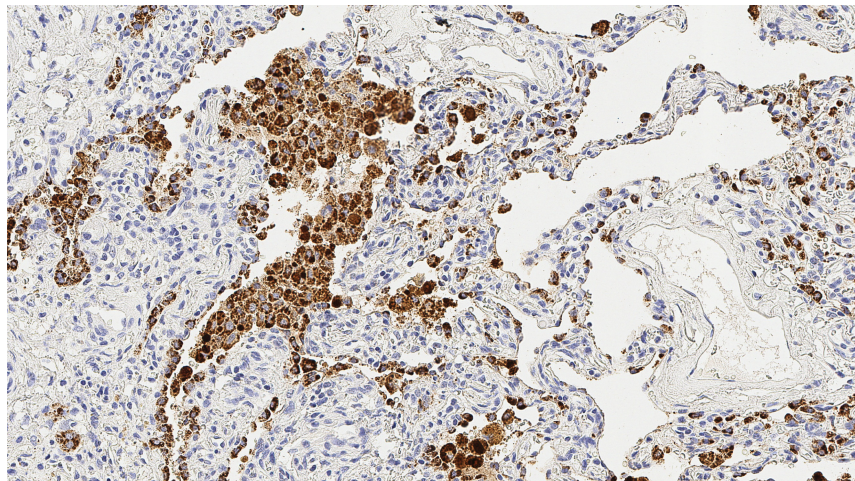
NAPSIN A (NAPSA) Mouse Monoclonal Antibody [Clone ID: IP64]

Product data:

Product Type:	Primary Antibodies
Clone Name:	IP64
Applications:	IHC
Recommended Dilution:	1:400
Reactivity:	Human
Host:	Mouse
Isotype:	IgG2b
Clonality:	Monoclonal
Immunogen:	Prokaryotic recombinant protein corresponding to 126 amino acids of the Napsin A protein
Specificity:	Human Napsin A molecule
Formulation:	Liquid tissue culture supernatant containing sodium azide as a preservative
Conjugation:	Unconjugated
Storage:	Store at 2-8°C
Stability:	12 months
Gene Name:	napsin A aspartic peptidase
Database Link:	Entrez Gene 9476 Human O96009
Background:	<p>Napsin A has a specific function in normal alveolar epithelium and is proposed to play a role in the proteolytic processing of surfactant precursors.</p> <p>Napsin A is reported to be predominantly expressed in lamellar bodies of type II pneumocytes, secondary lysosomes of alveolar macrophages, respiratory epithelium of terminal and respiratory bronchioles, plasma cells, within a subset of lymphocytes in normal lung, as well as in epithelial cells of renal tubules in normal kidney and is weakly expressed in normal spleen.</p> <p>Studies have reported that Napsin A is expressed in 90% of primary lung adenocarcinomas.</p>
Synonyms:	ASP4; KAP; Kdap; NAP1; NAPA; Napsin-1; SNAPA; TA01/TA02



[View online »](#)

Product images:

Human lung: immunohistochemical staining for Napsin A. Note cytoplasmic staining of pneumocytes and alveolar macrophages. Napsin A: clone IP64