

Product datasheet for **TA355316**

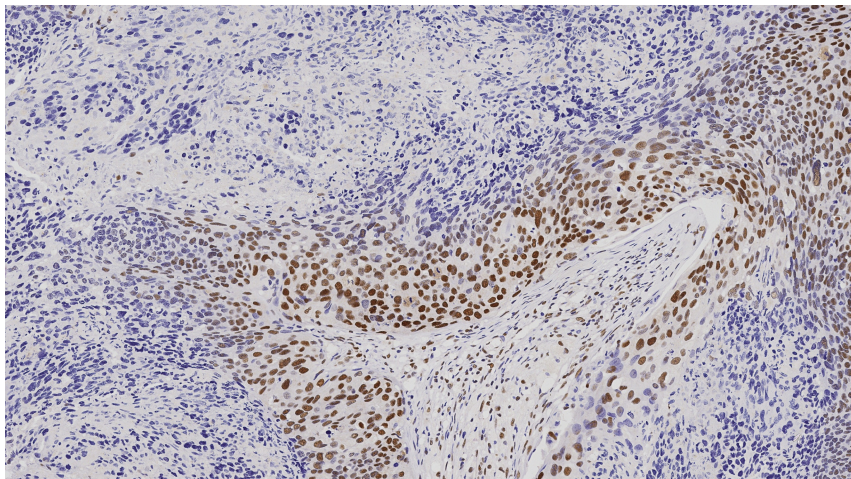
MLH1 Mouse Monoclonal Antibody [Clone ID: ES05]

Product data:

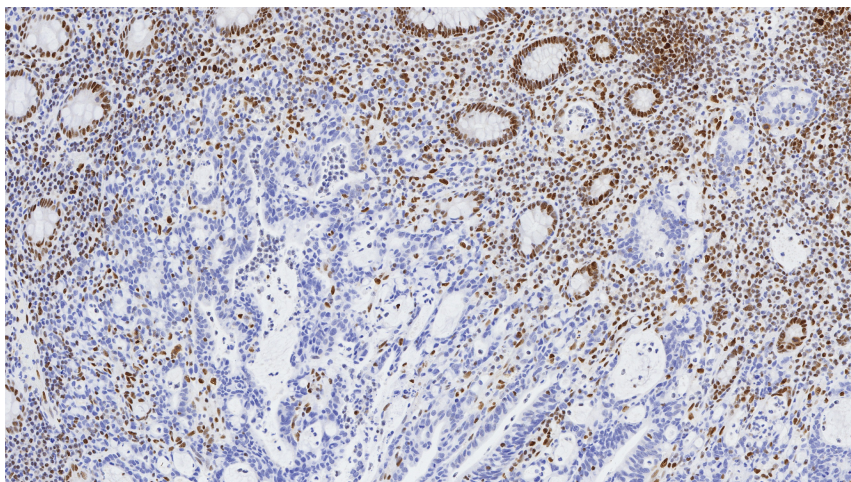
| | |
|-----------------------|--|
| Product Type: | Primary Antibodies |
| Clone Name: | ES05 |
| Applications: | IHC |
| Recommended Dilution: | 1:50 |
| Reactivity: | Human |
| Host: | Mouse |
| Isotype: | IgG1 |
| Clonality: | Monoclonal |
| Immunogen: | Prokaryotic recombinant protein corresponding to 210 amino acids of human MLH1 |
| Specificity: | Human Mismatch Repair Protein (MLH1) molecule |
| Formulation: | Liquid tissue culture supernatant containing 15 mM sodium azide as a preservative |
| Conjugation: | Unconjugated |
| Storage: | Store at 2-8°C |
| Stability: | 12 months |
| Gene Name: | mutL homolog 1 |
| Database Link: | Entrez Gene 4292 Human P40692 |
| Background: | MLH1, a mismatch repair protein involved in maintaining the integrity of genetic information, alongside MSH2, MSH6 and PMS2. Defects in DNA repair pathways have been linked to human carcinogenesis. Mutations in the MLH1 gene have been reported to be found in some forms of colon cancer, a subset of sporadic carcinomas and breast cancer. Loss of expression of MLH1 has also been reported in acute lymphoblastic leukemia, endometrial carcinoma, gastric carcinoma and ovarian carcinoma. |
| Synonyms: | COCA2; FCC2; hMLH1; HNPCC; HNPCC2; MGC5172 |



[View online »](#)

Product images:

Colorectal carcinoma: immunohistochemical staining for mismatch repair protein (MLH1). Mismatch Repair Protein (MLH1); clone ES05.



Colorectal carcinoma: immunohistochemical staining for mismatch repair protein (MLH1). Mismatch Repair Protein (MLH1); clone ES05.