

## Product datasheet for TA355314

### Mesothelin (MSLN) Mouse Monoclonal Antibody [Clone ID: 5B2]

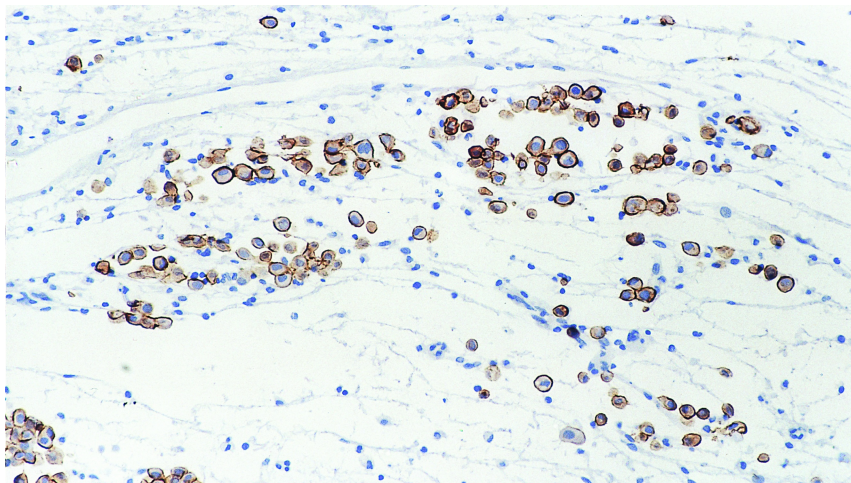
#### Product data:

Product Type:	Primary Antibodies
Clone Name:	5B2
Applications:	IHC
Recommended Dilution:	1:40
Reactivity:	Human
Host:	Mouse
Isotype:	IgG1
Clonality:	Monoclonal
Immunogen:	Recombinant prokaryotic fusion protein corresponding to approximately 100 amino acids which are present in the membrane-bound form of the mesothelin molecule.
Specificity:	Human mesothelin
Formulation:	Liquid tissue culture supernatant containing sodium azide as a preservative
Conjugation:	Unconjugated
Storage:	Store at 2-8°C
Stability:	12 months
Gene Name:	mesothelin
Database Link:	<a href="#">Entrez Gene 10232 Human Q13421</a>
Background:	<p>Mesothelin is a glycosyl-phosphatidylinositol-linked (GPI) glycoprotein of 40kD present on the surface of mesothelial cells, mesotheliomas, epithelial ovarian cancers and some squamous cell carcinomas. It is synthesized as a 69 kD precursor which is enzymatically processed into an N-terminal secreted form of 30 kD and the GPI-linked membrane-bound form of 40 kD. The secreted form is identical to the megakaryocyte potentiating factor, but it is the GPI-linked membrane-bound form which has generated interest. Mesothelin is abundantly expressed in the kidney and in occasional epithelial cells of the trachea, tonsil and fallopian tube. The function of mesothelin is unclear but it may have a role in cellular adhesion. Mesothelin is reported to be abundant in the normal mesothelial cells from which malignant mesotheliomas and ovarian cystadenocarcinomas are derived.</p>


[View online »](#)

**Synonyms:** CAK1; mesothelin; MPF; SMR

**Product images:**



Human mesothelioma: immunohistochemical staining for Mesothelin. Mesothelin: clone 5B2