

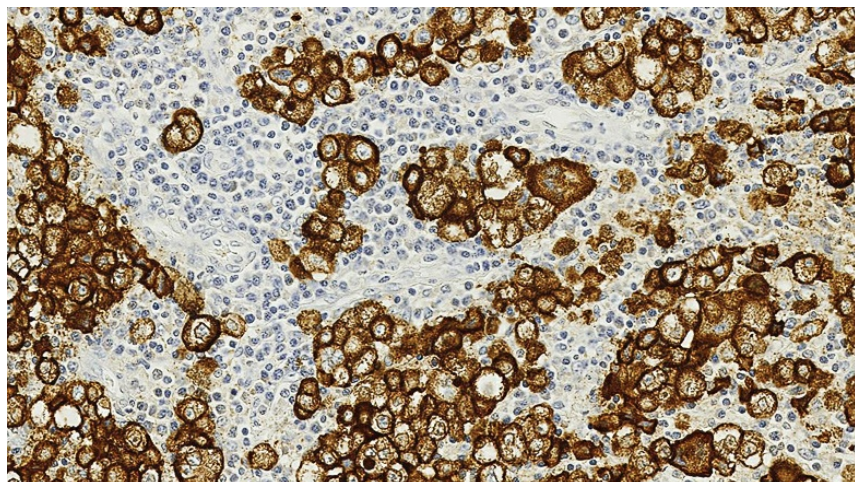
Product datasheet for TA355312

Melanoma Marker (HMB45) Mouse Monoclonal Antibody [Clone ID: HMB45]

Product data:

Product Type:	Primary Antibodies
Clone Name:	HMB45
Applications:	IHC
Recommended Dilution:	1:60
Reactivity:	Human
Host:	Mouse
Isotype:	IgG1
Clonality:	Monoclonal
Immunogen:	Extract of pigmented melanoma metastases from lymph nodes
Specificity:	Human HMB45 antigen
Formulation:	Liquid tissue culture supernatant containing sodium azide as a preservative
Conjugation:	Unconjugated
Storage:	Store at 2-8°C
Stability:	12 months
Background:	<p>The HMB45 antigen has also been identified in retinal pigment epithelium (RPE) but is reported to be reactive only with the transient prenatal and infantile RPE. No reaction is reported to be observed with intradermal nevi and normal adult melanocytes and non-melanocytic cells. Tumor cells of epithelial, lymphoid, glial and mesenchymal origin are reported to be negative. This clone is well described in the literature. It is indicated to label an intracytoplasmic antigen in the majority of melanomas and other tumors demonstrating melanoma/melanocytic differentiation.</p>



Product images:

Human skin, melanoma:
immunohistochemical staining for HMB45.
Note the melanoma showing strong
cytoplasmic staining. Melanoma Marker
(HMB45): clone HMB45