

Product datasheet for **TA355307**

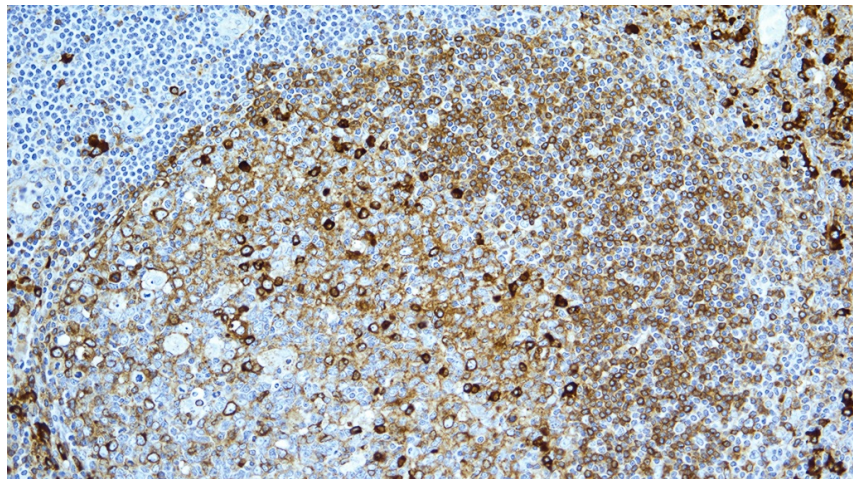
IGKC Mouse Monoclonal Antibody [Clone ID: CH15]

Product data:

Product Type:	Primary Antibodies
Clone Name:	CH15
Applications:	IHC
Recommended Dilution:	1:200
Reactivity:	Human
Host:	Mouse
Isotype:	IgG1
Clonality:	Monoclonal
Immunogen:	Prokaryotic recombinant protein corresponding to 106 amino acids of the human kappa light chain molecule
Specificity:	Human kappa light chain
Formulation:	Liquid tissue culture supernatant containing 15 mM sodium azide as a preservative
Conjugation:	Unconjugated
Storage:	Store at 2-8°C
Stability:	12 months
Gene Name:	immunoglobulin kappa constant
Database Link:	Entrez Gene 3514 Human
Background:	Immunoglobulins are polypeptides and comprise five major classes; immunoglobulin G (IgG), IgA, IgM, IgD and IgE. Each immunoglobulin consists of two identical heavy (H) chains and two identical light (L) chains. These are also subdivided into sub classes, for example, IgG1. There are two classes of light chain; kappa and lambda. The ratio of kappa chains and light chains varies between Ig classes and sub classes, but is also species specific. In humans, approximately 60% of light chains are kappa; however, in any particular immunoglobulin molecule the light chain will be either kappa or lambda. B cells contain either kappa or lambda mRNA.



[View online »](#)

Product images:

Human tonsil: immunohistochemical staining with Kappa Light Chain: clone CH15