

Product datasheet for **TA355306**

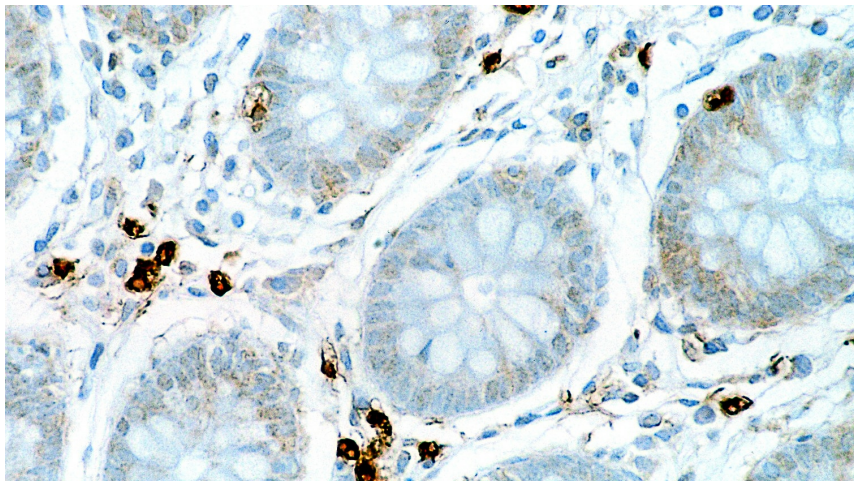
IL6 Mouse Monoclonal Antibody [Clone ID: 10C12]

Product data:

Product Type:	Primary Antibodies
Clone Name:	10C12
Applications:	IHC
Recommended Dilution:	1:50
Reactivity:	Human
Host:	Mouse
Isotype:	IgG2a
Clonality:	Monoclonal
Immunogen:	A prokaryotic recombinant protein containing part of the N-terminal domain of the interleukin 6 molecule
Specificity:	Human Interleukin 6
Formulation:	Liquid tissue culture supernatant containing 15 mM sodium azide as a preservative
Conjugation:	Unconjugated
Storage:	Store at 2-8°C
Stability:	12 months
Gene Name:	interleukin 6
Database Link:	Entrez Gene 3569 Human P05231
Background:	IL-6 is a multifunctional cytokine that is secreted by both lymphoid and non-lymphoid cells. It plays a key role in immune responses, hematopoiesis and is an important cytokine in cell proliferation and differentiation. It may also play an important role as an autocrine growth factor in metastatic prostate cancer. IL-6 has been reported to play a role in secretion or release of pituitary hormone in pituitary hormone secreting cells and adenomas. In addition, IL-6 has been suggested to have a trophic effect in nerve cells and to have a direct pathogenic role in CNS disorders. There are an increasing number of reports that cytokines of the IL-6 family play an important regulatory role in heart physiology.
Synonyms:	BSF-2; BSF2; CDF; HGF; HSF; IFNB2; IL-6; OTTHUMP00000158544



[View online »](#)

Product images:

Human colon: immunohistochemical staining for Interleukin 6. Note cytoplasmic staining of a proportion of lymphoid cells. Interleukin 6: clone 10C12