

## Product datasheet for **TA355300**

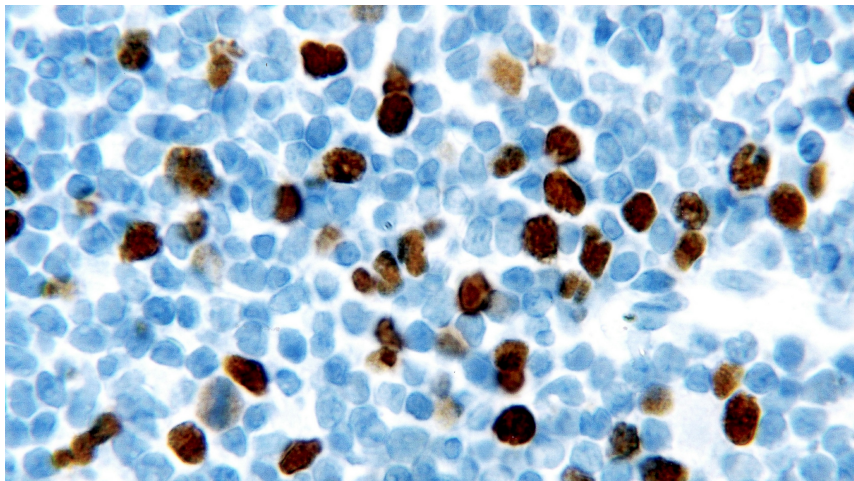
### Geminin (GMNN) Mouse Monoclonal Antibody [Clone ID: EM6]

#### Product data:

Product Type:	Primary Antibodies
Clone Name:	EM6
Applications:	IHC
Recommended Dilution:	1:40
Reactivity:	Human
Host:	Mouse
Isotype:	IgG2a
Clonality:	Monoclonal
Immunogen:	A prokaryotic recombinant protein containing amino acids 5–209 of the mature protein
Specificity:	Human Geminin
Formulation:	Liquid tissue culture supernatant containing 15 mM sodium azide as a preservative
Conjugation:	Unconjugated
Storage:	Store at 2-8°C
Stability:	12 months
Gene Name:	geminin, DNA replication inhibitor
Database Link:	<a href="#">Entrez Gene 51053 Human O75496</a>
Background:	Geminin is a protein of 209 amino acids thought to be involved in the control of DNA replication via the interaction with Cdt1. Geminin is not found in the G1 phase of the cell cycle, but is first expressed in the G1 to S transition phase, with expression levels rising through the rest of the cell cycle and levels reaching a maximum during mitosis. It has been proposed that geminin may be a tumor suppressor protein. Geminin is reported to be expressed in proliferating lymphocytes and epithelial cells, for example, germinal centers in tonsil as well as in colon, spermatocytes, seminiferous tubules of the testes, within the basal layers of the squamous epithelium of the skin and breast. Geminin is reported to be upregulated in cancers such as non-Hodgkin's lymphoma, B cell lymphoma, breast carcinoma and colon carcinoma.
Synonyms:	Gem; geminin; RP3-369A17.3



[View online »](#)

**Product images:**

Human chronic lymphocytic leukemia:  
immunohistochemical staining for Geminin.  
Geminin: clone EM6