

Product datasheet for **TA355297**

Fascin (FSCN1) Mouse Monoclonal Antibody [Clone ID: IM20]

Product data:

Product Type:	Primary Antibodies
Clone Name:	IM20
Applications:	IHC, WB
Recommended Dilution:	IHC: 1:200 - 1:40 WB: 1:10 - 1:200
Reactivity:	Human
Host:	Mouse
Isotype:	IgG1
Clonality:	Monoclonal
Immunogen:	Prokaryotic recombinant protein corresponding to the C-terminal region of the fascin molecule
Specificity:	Human fascin.
Formulation:	Liquid tissue culture supernatant containing 15 mM sodium azide as a preservative
Conjugation:	Unconjugated
Storage:	Store at 2-8°C
Stability:	12 months
Gene Name:	fascin actin-bundling protein 1
Database Link:	Entrez Gene 6624 Human Q16658



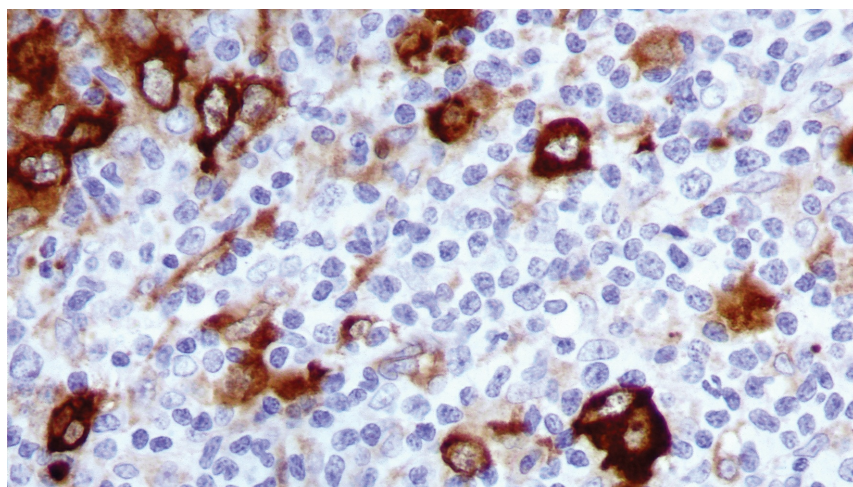
[View online »](#)

Background:

Human fascin is a 55 to 58 kD actin-bundling protein, whose actin binding ability is regulated by phosphorylation. In normal tissues the detection of fascin is reported to be predominantly restricted to dendritic cells, and in the thymus has been observed only in medullary dendritic cells. In reactive nodes, interdigitating reticulum cells of T cell zones, cells in subcapsular areas, and cells of the reticular network express fascin. Variable expression is seen in follicular dendritic cells and endothelial cells. Lymphoid cells, myeloid cells and plasma cells do not express fascin; however, in cases of Hodgkin's disease, including nodular sclerosis, mixed cellularity lymphocyte depletion and unclassified cases, most or all Reed Sternberg cells are reported to be positive for fascin. Fascin expression may be induced by Epstein-Barr virus (EBV) infection of B cells with the possibility that viral induction of fascin in lymphoid or other cell types must also be considered in EBV-positive cases.

Synonyms:

FAN1; FLJ38511; HSN; p55; SNL

Product images:

Hodgkin's lymphoma: immunohistochemical staining with Fascin: clone IM20