

Product datasheet for **TA355296**

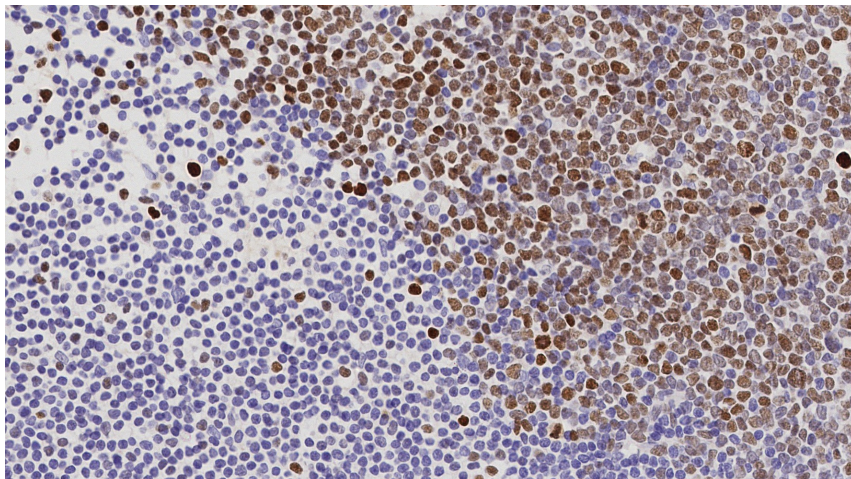
EZH2 Mouse Monoclonal Antibody [Clone ID: 6A10]

Product data:

Product Type:	Primary Antibodies
Clone Name:	6A10
Applications:	IHC
Recommended Dilution:	1:200
Reactivity:	Human
Host:	Mouse
Isotype:	IgG1
Clonality:	Monoclonal
Immunogen:	Prokaryotic recombinant protein corresponding to a portion of the N-terminus domain of the human EZH2 molecule
Specificity:	Human EZH2 (Enhancer of Zeste Homolog 2 (Drosophila)), (85 kD). Region common to isoforms A and B of the protein
Formulation:	Liquid tissue culture supernatant containing 15 mM sodium azide as a preservative
Conjugation:	Unconjugated
Storage:	Store at 2-8°C
Stability:	12 months
Gene Name:	enhancer of zeste 2 polycomb repressive complex 2 subunit
Database Link:	Entrez Gene 2146 Human Q15910
Background:	Polycomb-group proteins (PcG) such as EZH2 (Enhancer of Zeste Homolog 2 (Drosophila)) form multimeric gene repressing complexes involved in axial patterning, hematopoiesis and cell cycle regulation. PcG proteins ensure correct embryonic development by expressing homeobox genes as well as contributing to the regulation of lymphopoiesis.
Synonyms:	ENX-1; ENX1; EZH1; KMT6; MGC9169



[View online »](#)

Product images:

T-Cell Lymphoma: immunohistochemical staining for EZH2 antigen. EZH2 (Enhancer of Zeste Homolog 2 (Drosophila)); clone 6A10