

Product datasheet for **TA355293**

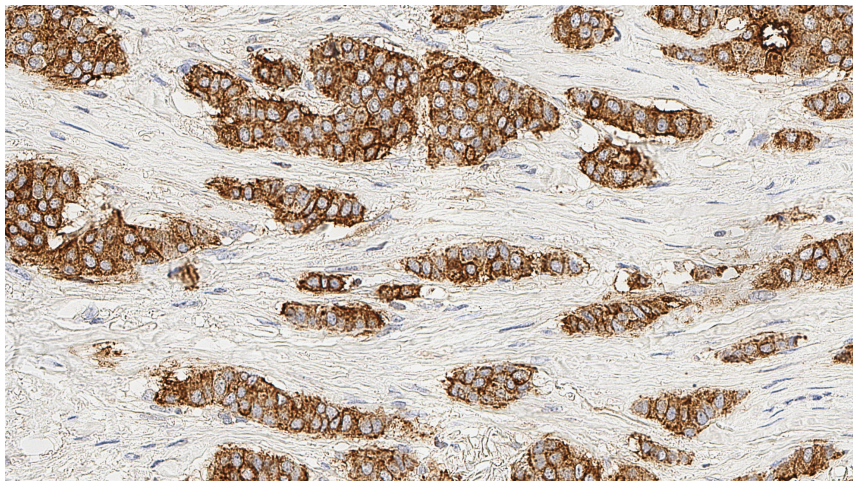
EMA (MUC1) Mouse Monoclonal Antibody [Clone ID: GP1.4]

Product data:

Product Type:	Primary Antibodies
Clone Name:	GP1.4
Applications:	IHC
Recommended Dilution:	1:200
Reactivity:	Human
Host:	Mouse
Isotype:	IgG1
Clonality:	Monoclonal
Immunogen:	Human milk fat globule membrane
Specificity:	Human epithelial membrane antigen
Formulation:	Liquid tissue culture supernatant containing sodium azide as a preservative
Conjugation:	Unconjugated
Storage:	Store at 2-8°C
Stability:	12 months
Gene Name:	mucin 1, cell surface associated
Database Link:	Entrez Gene 4582 Human P15941
Background:	Epithelial membrane antigen (EMA), also known as episialin, is reported to be expressed in a variety of normal and neoplastic epithelia. It has been reported that markers to CD45 (LCA) when used in conjunction with markers to EMA are useful in labeling cells of lymphoid origin, whereas the combination of anti-cytokeratin antibodies together with EMA is useful to characterize cells of epithelial origin. EMA is also notably described to be expressed in a subset of Hodgkin's lymphomas.
Synonyms:	CD227; EMA; episialin; H23AG; KL-6; MAM6; MUC-1; MUC-1/SEC; MUC-1/X; MUC1/ZD; PEM; PEMT; PUM



[View online »](#)

Product images:

Human breast cancer: immunohistochemical staining for Epithelial Membrane Antigen.
Epithelial Membrane Antigen: clone GP1.4