

Product datasheet for **TA355292**

EGFR Mouse Monoclonal Antibody [Clone ID: EGFR.113]

Product data:

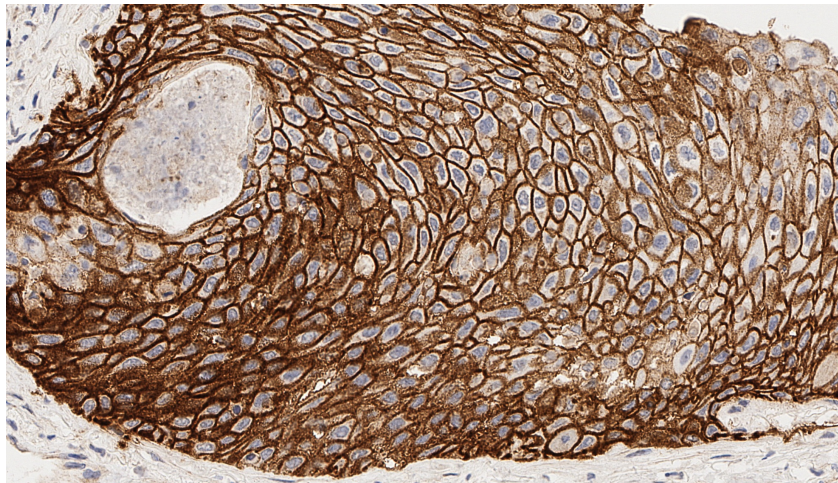
Product Type:	Primary Antibodies
Clone Name:	EGFR.113
Applications:	IHC
Recommended Dilution:	1:20
Reactivity:	Human
Host:	Mouse
Isotype:	IgG2a
Clonality:	Monoclonal
Immunogen:	Prokaryotic fusion protein corresponding to the external domain of the epidermal growth factor receptor molecule
Specificity:	External domain of the human epidermal growth factor receptor
Formulation:	Liquid tissue culture supernatant containing sodium azide as a preservative
Conjugation:	Unconjugated
Storage:	Store at 2-8°C
Stability:	12 months
Gene Name:	epidermal growth factor receptor
Database Link:	Entrez Gene 1956 Human P00533
Background:	Epidermal growth factor receptor (EGFR) is a transmembrane protein receptor of 170 kD with tyrosine kinase activity. Increased levels of EGFR are reported to be linked with malignant transformation of squamous cells, for example, in squamous cell carcinoma of the lung, head, neck, skin, cervix and esophagus. EGFR may also play a role in the development and progression of hepatocellular carcinomas where recurrence rates are higher in EGFR-positive cases. This correlation has similarly been reported in colorectal cancers where EGFR, produced by tumor cells, plays an important role in the invasiveness and proliferation of colorectal cancers. The majority of published studies of EGFR expression in human breast cancer has similarly shown an association with EGFR expression where it is inversely related to estrogen receptor status.



[View online »](#)

Synonyms: ERBB; ERBB1; HER1; mENA; PIG61

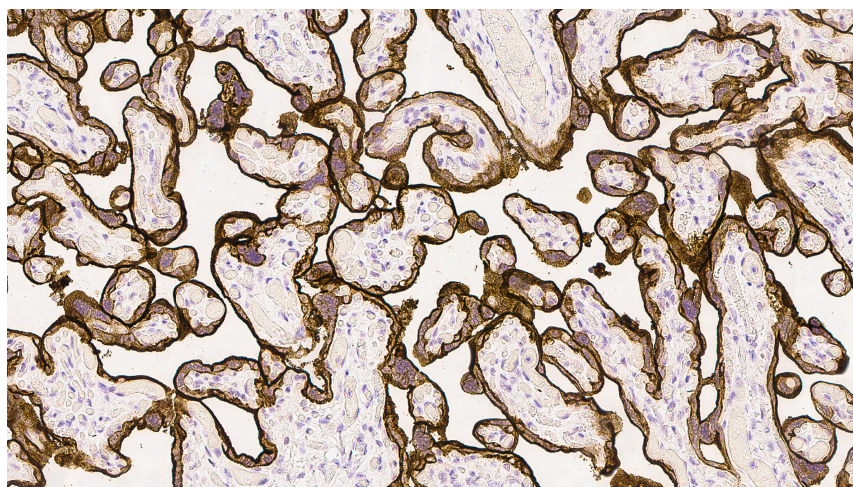
Product images:



Human Placenta: immunohistochemical staining for Epidermal Growth Factor Receptor. Epidermal Growth Factor Receptor: clone EGFR.113

□

Human Placenta: immunohistochemical staining for Epidermal Growth Factor Receptor. Epidermal Growth Factor Receptor: clone EGFR.113



Human Placenta: immunohistochemical staining for Epidermal Growth Factor Receptor. Epidermal Growth Factor Receptor: clone EGFR.113