

Product datasheet for **TA355291**

E Cadherin (CDH1) Mouse Monoclonal Antibody [Clone ID: 36B5]

Product data:

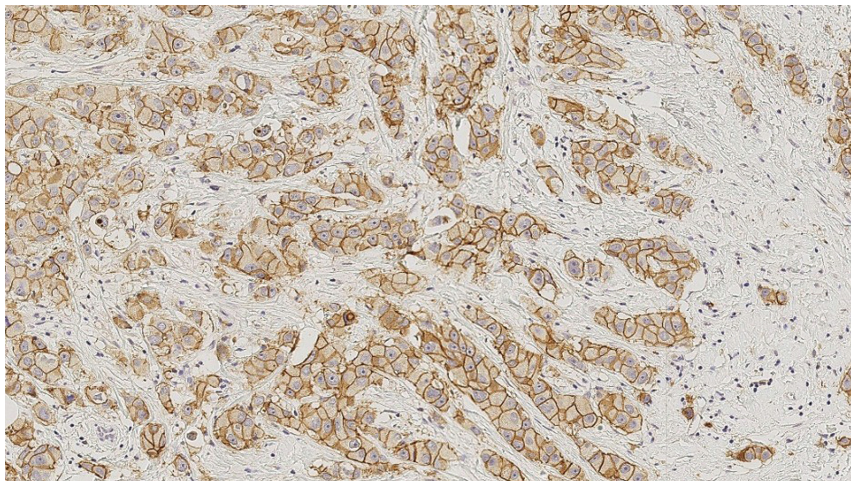
Product Type:	Primary Antibodies
Clone Name:	36B5
Applications:	IHC
Recommended Dilution:	1:25
Reactivity:	Human
Host:	Mouse
Isotype:	IgG1
Clonality:	Monoclonal
Immunogen:	Prokaryotic recombinant protein corresponding to the N-terminal external region of the E-Cadherin molecule
Specificity:	Human E-Cadherin
Formulation:	Liquid tissue culture supernatant containing sodium azide as a preservative
Conjugation:	Unconjugated
Storage:	Store at 2-8°C
Stability:	12 months
Gene Name:	cadherin 1
Database Link:	Entrez Gene 999 Human P12830
Background:	<p>E-cadherin is a Ca²⁺-dependent, transmembrane cell adhesion molecule. It plays an important role in the growth, development and the intercellular adhesion of epithelial cells. Most tumors have an abnormal architecture and any subsequent loss of adhesiveness is thought to be an important step in the development of local invasion. E-cadherin may have a role in neoplastic progression, particularly as a suppressor of invasion. In prostate cancers, for example, the expression of E-cadherin is reported to be reduced or absent in comparison with its expression in normal prostate which is uniformly strong. Reduced expression or absence of E-cadherin in addition to alpha, beta and gamma-catenin in primary breast carcinomas has also been reported and these four proteins are associated with the development of metastases.</p>



[View online »](#)

Synonyms: Arc-1; CD324; CDHE; E-Cadherin; ECAD; LCAM; UVO; uvomorulin

Product images:



Invasive breast carcinoma: immunohistochemical staining for E-Cadherin. Note the membrane and cytoplasmic staining of tumor cells. E-Cadherin: clone 36B5