

## Product datasheet for **TA355283**

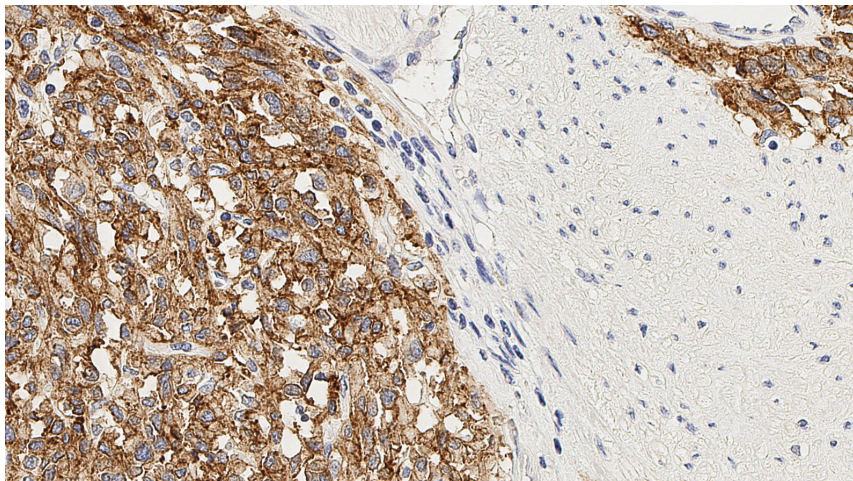
### **TMEM16A (ANO1) Mouse Monoclonal Antibody [Clone ID: K9]**

#### **Product data:**

Product Type:	Primary Antibodies
Clone Name:	K9
Applications:	IHC
Recommended Dilution:	1:50
Reactivity:	Human
Host:	Mouse
Isotype:	IgG2b
Clonality:	Monoclonal
Immunogen:	Prokaryotic recombinant protein corresponding to part of the C-terminus of the cytoplasmic domain of the human DOG-1 molecule
Specificity:	Human DOG-1
Formulation:	Liquid tissue culture supernatant containing sodium azide as a preservative
Conjugation:	Unconjugated
Storage:	Store at 2-8°C
Stability:	12 months
Gene Name:	anoctamin 1
Database Link:	<a href="#">Entrez Gene 55107 Human Q5XXA6</a>
Background:	DOG-1, a 986 amino acid protein of unknown function, is expressed predominantly on the plasma membrane of gastrointestinal stromal tumors (GISTs) and is rarely expressed in other soft tissue tumors, which, due to appearance, can be confused with GISTs. Reactivity for DOG-1 has been suggested to aid in the identification of GISTs, including Platelet-Derived Growth Factor Receptor Alpha mutants that fail to express KIT antigen.
Synonyms:	DOG1; FLJ10261; ORAOV2; TAOS2; TMEM16A



[View online »](#)

**Product images:**

Human colon, gastrointestinal stromal tumor:  
immunohistochemical staining for DOG-1. DOG-  
1: clone K9