

## Product datasheet for **TA355282**

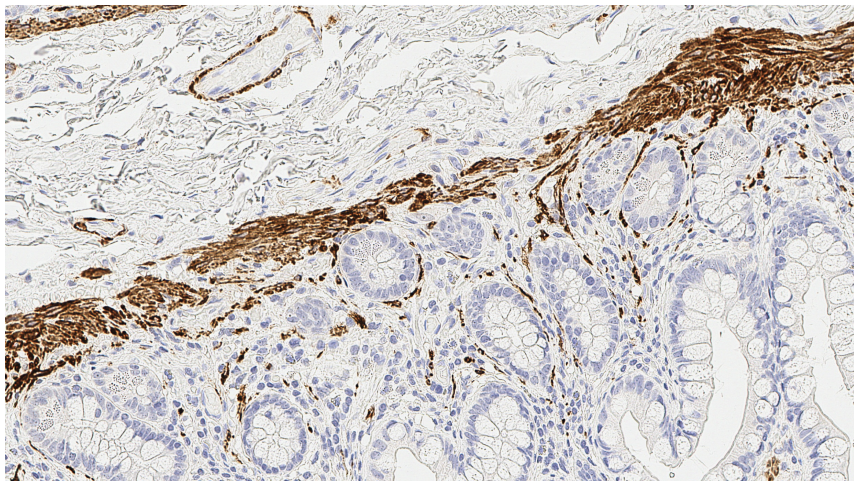
### Desmin (DES) Mouse Monoclonal Antibody [Clone ID: DE-R-11]

#### Product data:

Product Type:	Primary Antibodies
Clone Name:	DE-R-11
Applications:	IHC
Recommended Dilution:	1:200
Reactivity:	Human
Host:	Mouse
Isotype:	IgG1
Clonality:	Monoclonal
Immunogen:	Purified porcine desmin
Specificity:	Human desmin, a 53 kD intermediate filament protein in muscle cells
Formulation:	Liquid tissue culture supernatant containing sodium azide as a preservative
Conjugation:	Unconjugated
Storage:	Store at 2-8°C
Stability:	12 months
Gene Name:	desmin
Database Link:	<a href="#">Entrez Gene 1674 Human P17661</a>
Background:	DES-DERII reacts with an 18 kD rod piece of the intermediate filament protein desmin (53 kD) in muscle cells. The antibody does not appear to recognize other intermediate filament proteins. In normal tissues, Clone DE-R-11 reacts with both striated (skeletal and cardiac) and smooth muscle cells. The labeling is confined to the Z bands in skeletal and cardiac muscle giving a characteristic striated appearance.
Synonyms:	CMD1I; CSM1; CSM2; desmin; FLJ12025; FLJ39719; FLJ41013; FLJ41793



[View online »](#)

**Product images:**

Human bowel: immunohistochemical staining for desmin. Note cytoplasmic staining of smooth muscle containing cells. Desmin: clone DE-R-11