

Product datasheet for **TA355271**

Cytokeratin 7 (KRT7) Mouse Monoclonal Antibody [Clone ID: RN7]

Product data:

Product Type:	Primary Antibodies
Clone Name:	RN7
Applications:	IHC
Recommended Dilution:	1:100
Reactivity:	Human
Host:	Mouse
Isotype:	IgG1
Clonality:	Monoclonal
Immunogen:	Prokaryotic recombinant protein corresponding to part of the C-terminal region of the cytokeratin 7 intermediate filament molecule
Specificity:	Human cytokeratin 7 intermediate filament protein.
Formulation:	Liquid tissue culture supernatant containing sodium azide as a preservative
Conjugation:	Unconjugated
Storage:	Store at 2-8°C
Stability:	12 months
Gene Name:	keratin 7
Database Link:	Entrez Gene 3855 Human P08729



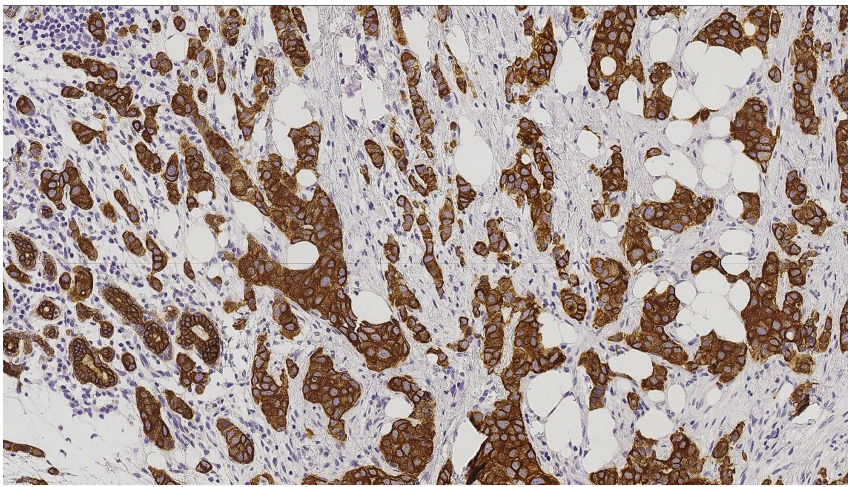
[View online »](#)

Background:

Cytokeratins are intermediate filament proteins present in epithelial cells. They are expressed in a tissue-specific manner in normal organs and the tumors that arise from them. Cytokeratin 7 belongs to the neutral basic type B subfamily of cytokeratins. Its distribution is confined to glandular and transitional epithelia. Cytokeratin 7 is reported to be expressed in abundance in cultured bronchial and mesothelial cells but only at lower levels in cultured epidermal cells. The predicted amino acid sequence of this keratin has revealed a striking difference between this keratin and the type II keratins expressed in epidermal cells. Cytokeratin 7 has been reported in adenocarcinomas of the lung, breast, endometrium, ovary, thyroid as well as in carcinomas of the bladder and chromophobe renal cell carcinoma. Cytokeratin 7 and Cytokeratin 20 expression have been reported to show characteristic patterns on primary and metastatic lung and colorectal adenocarcinomas.

Synonyms:

CK-7; CK7; Cytokeratin-7; K2C7; K7; Keratin-7; MGC3625; MGC129731; sarcolectin; SCL

Product images:

Invasive breast carcinoma: immunohistochemical staining for Cytokeratin 7. Cytokeratin 7: clone RN7