

Product datasheet for **TA355268**

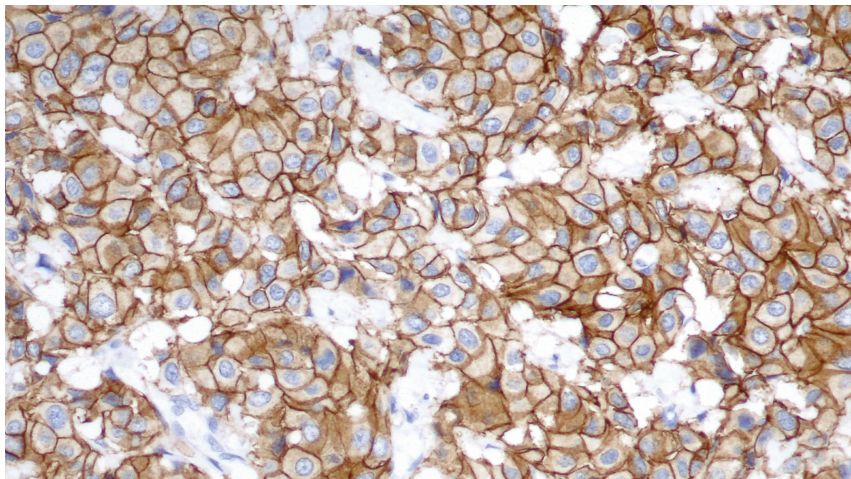
Her2 (ERBB2) Mouse Monoclonal Antibody [Clone ID: CB11]

Product data:

Product Type:	Primary Antibodies
Clone Name:	CB11
Applications:	IHC
Recommended Dilution:	1:40
Reactivity:	Human
Host:	Mouse
Isotype:	IgG1
Clonality:	Monoclonal
Immunogen:	Synthetic peptide corresponding to a site on the internal domain of the human c-erbB-2 oncoprotein
Specificity:	Human c-erbB-2 oncoprotein (internal domain). Specific binding has been demonstrated by immunoprecipitation with c-erbB-2 oncoprotein SKBR3 cells
Formulation:	Liquid tissue culture supernatant containing sodium azide as a preservative
Conjugation:	Unconjugated
Storage:	Store at 2-8°C
Stability:	12 months
Gene Name:	erb-b2 receptor tyrosine kinase 2
Database Link:	Entrez Gene 2064 Human P04626
Background:	The c-erbB-2 oncoprotein is closely related in structure to the epidermal growth factor receptor and is a member of a large family of cell surface growth factor receptors. c-erbB-2 oncoprotein is reported to be detectable in a proportion of breast and other adenocarcinomas as well as transitional cell carcinomas. c-erbB-2 oncoprotein is present in a wide variety of cell types in a range of normal human fetal and adult tissues, including breast, stomach and ovary. CB11 detects the internal domain of the c-erbB-2 oncoprotein. CBE-356 detects the external domain of the c-erbB-2 oncoprotein.
Synonyms:	C-erbB-2; CD340; erbB-2; HER-2; HER-2/neu; HER2; herstatin; NEU; NGL; p185erbB2; TKR1



[View online »](#)

Product images:

Human breast: invasive ductal carcinoma:
immunohistochemical staining for c-erbB-2
Oncoprotein (HER-2): clone CB11