

Product datasheet for **TA355251**

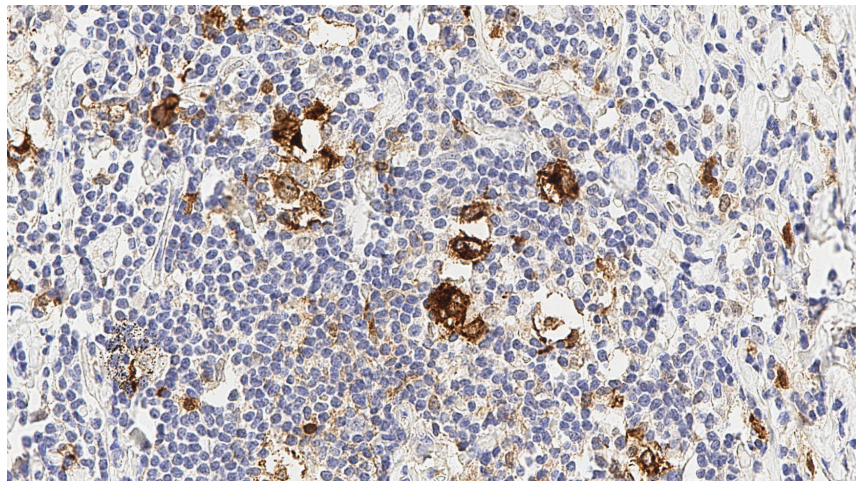
CD30 (TNFRSF8) Mouse Monoclonal Antibody [Clone ID: JCM182]

Product data:

| | |
|-----------------------|--|
| Product Type: | Primary Antibodies |
| Clone Name: | JCM182 |
| Applications: | IHC |
| Recommended Dilution: | 1:100 |
| Reactivity: | Human |
| Host: | Mouse |
| Isotype: | IgG1 |
| Clonality: | Monoclonal |
| Immunogen: | Prokaryotic recombinant protein corresponding to the internal domain of the protein of the human CD30 molecule |
| Specificity: | Human CD30 |
| Formulation: | Liquid tissue culture supernatant containing sodium azide as a preservative |
| Conjugation: | Unconjugated |
| Storage: | Store at 2-8°C |
| Stability: | 12 months |
| Gene Name: | tumor necrosis factor receptor superfamily member 8 |
| Database Link: | Entrez Gene 943 Human P28908 |
| Background: | The CD30 antigen is a single chain glycoprotein with a molecular weight of 120 kD. CD30 antigen is known to act as a receptor for a cytokine ligand, CD30L, and may also play a role in the regulation of cellular growth and transformation. CD30 antigen is reported to be expressed on the surface of multinucleated Reed Sternberg cells, mononuclear Hodgkin's cells and in the majority of anaplastic large cell lymphomas. The CD30 antigen is expressed in non-Hodgkin's lymphoma and virally transformed cells, for example, EBV-transformed B cells. |
| Synonyms: | CD30; D1S166E; KI-1 |



[View online »](#)

Product images:

Human lymph node, nodular sclerosing
Hodgkin's disease: immunohistochemical staining
for CD30. CD30: clone JCM182