

Product datasheet for **TA355250**

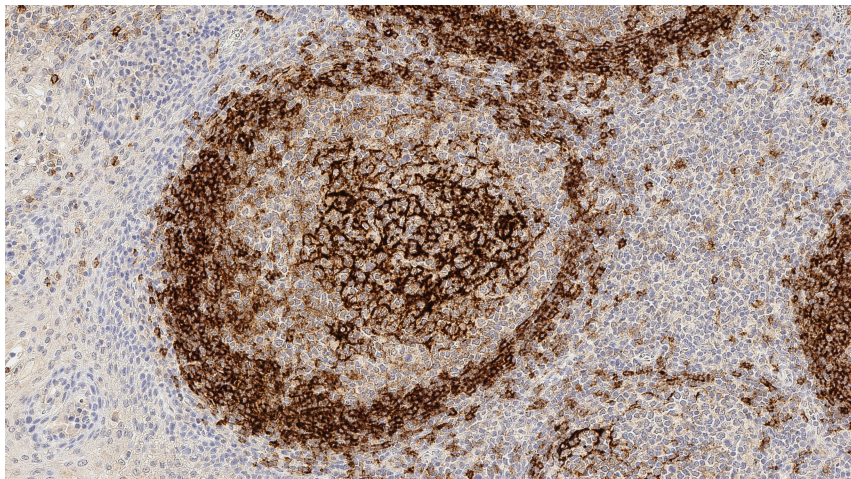
CD23 (FCER2) Mouse Monoclonal Antibody [Clone ID: 1B12]

Product data:

Product Type:	Primary Antibodies
Clone Name:	1B12
Applications:	IHC
Recommended Dilution:	1:50
Reactivity:	Human
Host:	Mouse
Isotype:	IgG1
Clonality:	Monoclonal
Immunogen:	Prokaryotic recombinant fusion protein corresponding to the external domain of the human CD23 molecule
Specificity:	Human CD23 molecule
Formulation:	Liquid tissue culture supernatant containing sodium azide as a preservative
Conjugation:	Unconjugated
Storage:	Store at 2-8°C
Stability:	12 months
Gene Name:	Fc fragment of IgE receptor II
Database Link:	Entrez Gene 2208 Human P06734
Background:	The CD23 molecule is the low affinity IgE receptor found on B cells. It is a membrane glycoprotein of 45 kD and is reported to be found on a sub-population of peripheral blood cells, B lymphocytes and on EBV-transformed B lymphoblastoid cell lines. Expression of CD23 antigen has been reported on monocytes and dendritic cells.
Synonyms:	BLAST-2; CD23; CD23A; CLEC4J; Fc-epsilon-RII; FCE2; IGEBF



[View online »](#)

Product images:

Human tonsil: immunohistochemical staining for CD23. Note intense staining of follicular dendritic cell network and weaker staining of mantle zone cells. CD23: clone 1B12