

Product datasheet for **TA355245**

CD13 (ANPEP) Mouse Monoclonal Antibody [Clone ID: 38C12]

Product data:

Product Type:	Primary Antibodies
Clone Name:	38C12
Applications:	IHC
Recommended Dilution:	1:80
Reactivity:	Human
Host:	Mouse
Isotype:	IgG1
Clonality:	Monoclonal
Immunogen:	Recombinant prokaryotic fusion protein corresponding to the C-terminal region of the extracellular domain
Specificity:	Human CD13 antigen
Formulation:	Liquid tissue culture supernatant containing sodium azide as a preservative
Conjugation:	Unconjugated
Storage:	Store at 2-8°C
Stability:	12 months
Gene Name:	alanyl aminopeptidase, membrane
Database Link:	Entrez Gene 290 Human P15144

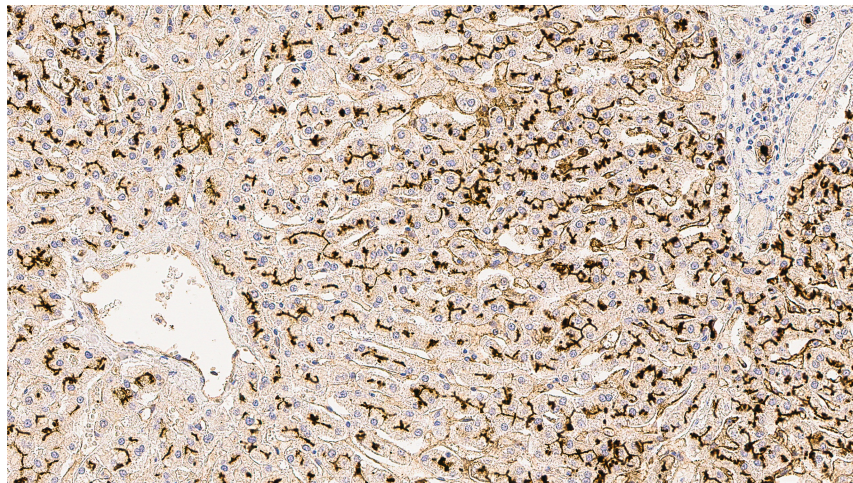
Background: CD13 antigen, also known as aminopeptidase N, is a member of type II integral membrane metalloproteases, which also includes the leukocyte antigens CD10, CD26, CD73 and BP-1. CD13 antigen is a receptor for the coronaviruses which cause respiratory disease in humans and several animal species. The antigen functions as a zinc-binding metalloprotease which plays a role in cell surface antigen presentation by trimming the N-terminal amino acids from MHC class II-bound peptides. CD13 antigen is reported to be expressed on granulocytes, monocytes and their precursors, most acute myeloid leukemias and a smaller proportion of acute lymphoid leukemias. Non-hematopoietic cells which express CD13 antigen include epithelial cells, renal proximal tubules, intestinal brush border, endothelial cells, fibroblasts, brain cells, bone marrow, osteoclasts and cells lining the bile canaliculi.



[View online »](#)

Synonyms: AP-M; AP-N; APN; CD13; GP150; hAPN; LAP1; P150; PEPN

Product images:



Human liver: immunohistochemical staining for CD13. Note staining of the bile canaliculi. CD13: clone 38C12