

Product datasheet for **TA355242**

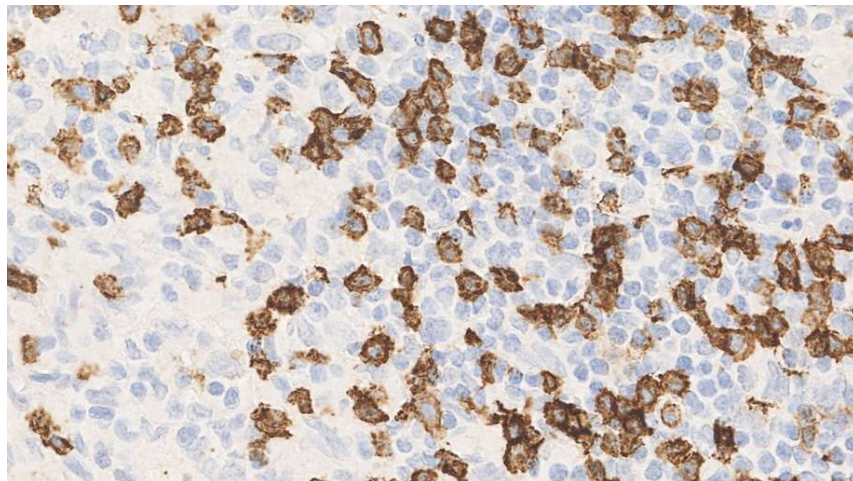
CD8 Mouse Monoclonal Antibody [Clone ID: 4B11]

Product data:

Product Type:	Primary Antibodies
Clone Name:	4B11
Applications:	IHC
Recommended Dilution:	1:50
Reactivity:	Human
Host:	Mouse
Isotype:	IgG2b
Clonality:	Monoclonal
Immunogen:	Peptide corresponding to the alpha chain cytoplasmic portion of the human CD8 molecule
Specificity:	Human CD8 antigen
Formulation:	Liquid tissue culture supernatant containing sodium azide as a preservative
Conjugation:	Unconjugated
Storage:	Store at 2-8°C
Stability:	12 months
Background:	The CD8 molecule is composed of two chains and has a molecular weight of 32 kD. It is found on a T cell subset of normal cytotoxic/suppressor cells which make up approximately 20-35% of human peripheral blood lymphocytes. The CD8 antigen is reported to be detected on natural killer cells, 80% of thymocytes, on a subpopulation of 30% of peripheral blood null cells and 15-30% of bone marrow cells.



[View online »](#)

Product images:

Human lymph node, T cell lymphoma:
immunohistochemical staining for CD8. Note the
neoplastic cells show a moderate to strong,
distinct membrane staining reaction. CD8: clone
4B11