

## Product datasheet for TA355241

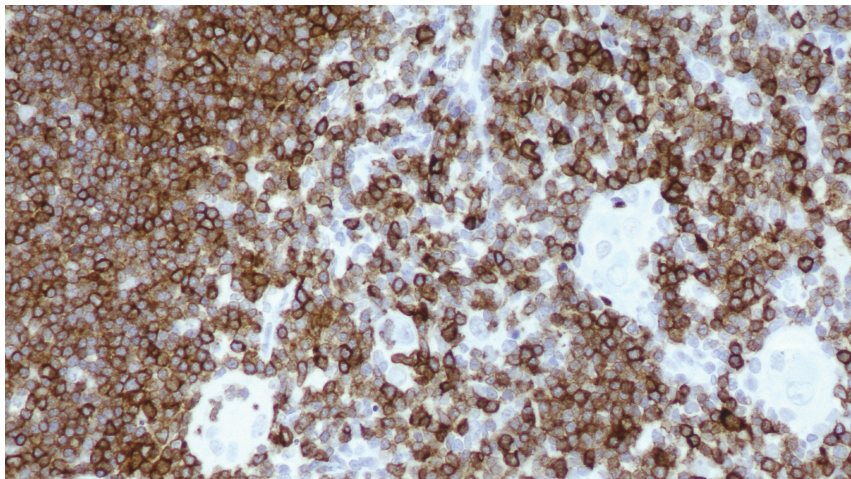
### CD7 Mouse Monoclonal Antibody [Clone ID: LP15]

#### Product data:

Product Type:	Primary Antibodies
Clone Name:	LP15
Applications:	IHC
Recommended Dilution:	1:100
Reactivity:	Human
Host:	Mouse
Isotype:	IgG2b
Clonality:	Monoclonal
Immunogen:	Prokaryotic recombinant fusion protein corresponding to a portion of the extracellular domain of the human CD7 molecule.
Specificity:	Human CD7 antigen.
Formulation:	Liquid tissue culture supernatant containing sodium azide as a preservative
Conjugation:	Unconjugated
Storage:	Store at 2-8°C
Stability:	12 months
Gene Name:	CD7 molecule
Database Link:	<a href="#">Entrez Gene 924 Human P09564</a>
Background:	The CD7 molecule is a membrane-bound glycoprotein of 40 kD and is the earliest T cell specific antigen to be expressed in lymphocytes. CD7 antigen is also the only early marker to persist throughout differentiation. The function and role of the CD7 molecule has not yet been fully identified, although the activation of T cells with gamma/delta receptors has been proposed based on mAb-induced activation. CD7 antigen is reported to be found on the majority of peripheral blood T cells, most natural killer cells and thymocytes.
Synonyms:	GP40; Leu-9; Tp40; TP41



[View online »](#)

**Product images:**

T cell lymphoma: immunohistochemical staining for CD7. CD7: clone LP15