

## Product datasheet for **TA355236**

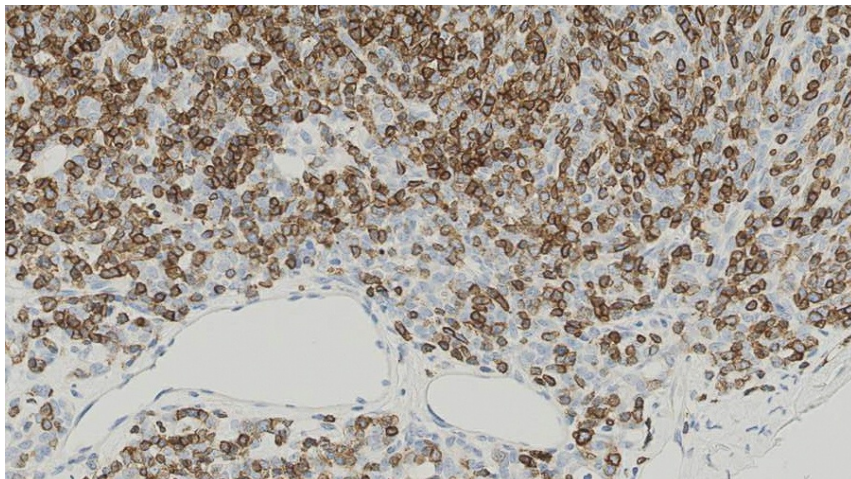
### CD1 (CD1A) Mouse Monoclonal Antibody [Clone ID: MTB1]

#### Product data:

Product Type:	Primary Antibodies
Clone Name:	MTB1
Applications:	IHC
Recommended Dilution:	1:50
Reactivity:	Human
Host:	Mouse
Isotype:	IgG1
Clonality:	Monoclonal
Immunogen:	Prokaryotic recombinant fusion protein corresponding to the full external domain of the human CD1a molecule
Specificity:	Human CD1a molecule. Some evidence of crossreactivity with CD1b shown by reactivity with small focal groups of lymphocytes outside the germinal centers of tonsil.
Formulation:	Liquid tissue culture supernatant containing sodium azide as a preservative
Conjugation:	Unconjugated
Storage:	Store at 2-8°C
Stability:	12 months
Gene Name:	CD1a molecule
Database Link:	<a href="#">Entrez Gene 909 Human P06126</a>
Background:	CD1a is a protein of 43 to 49 kD expressed on dendritic cells and cortical thymocytes. CD1a antigen expression has been shown to be useful in differentiating Langerhans cells, powerful antigen presenting cells present in skin and epithelia, from interdigitating cells. Immunohistochemical studies for CD1a antigen have reported a reduction in epidermal Langerhans cells in graft versus host disease and the participation of CD1a antigen-positive dendritic cells in atherosclerotic lesion formation and asthmatic inflammation.
Synonyms:	CD1; FCB6; HTA1; R4; T6



[View online »](#)

**Product images:**

Human thymoma: immunohistochemical staining for CD1a. CD1a: clone MTB1