

Product datasheet for **TA355235**

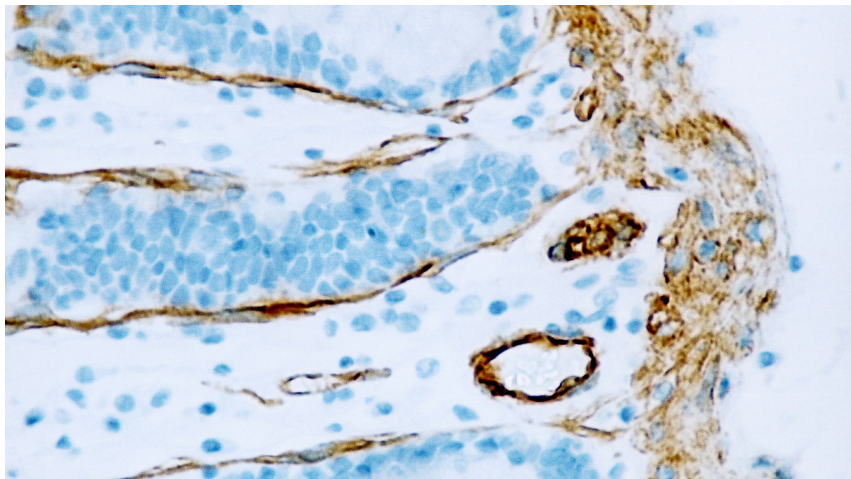
Caveolin 1 (CAV1) Mouse Monoclonal Antibody [Clone ID: 4D6]

Product data:

Product Type:	Primary Antibodies
Clone Name:	4D6
Applications:	IHC, WB
Recommended Dilution:	IHC: 1:200 WB: 1:4000
Reactivity:	Human
Host:	Mouse
Isotype:	IgG2a
Clonality:	Monoclonal
Immunogen:	Prokaryotic recombinant protein corresponding to the N-terminus domain of the human caveolin-1 molecule
Specificity:	Human Caveolin-1
Formulation:	Liquid tissue culture supernatant containing 15 mM sodium azide as a preservative
Conjugation:	Unconjugated
Storage:	Store at 2-8°C
Stability:	12 months
Gene Name:	caveolin 1
Database Link:	Entrez Gene 857 Human Q03135
Background:	Caveolin-1 is a major structural component of caveolae, which are vesicular invaginations present on the plasma membrane of different cell types. It plays a regulatory role in several signaling pathways and is reported to be most abundantly expressed in terminally differentiated mesenchymal cells such as smooth muscle cells, adipocytes and endothelial cells. High levels are also reported in fibroblasts where a fine granular membranous and diffuse cytoplasmic staining pattern is described.
Synonyms:	BSCL3; CAV; CGL3; MSTP085; VIP21



[View online »](#)

Product images:

Normal human colon: immunohistochemical staining for Caveolin-1. Note cytoplasmic staining of smooth muscle and endothelium. Caveolin-1: clone 4D6