

Product datasheet for **TA355233**

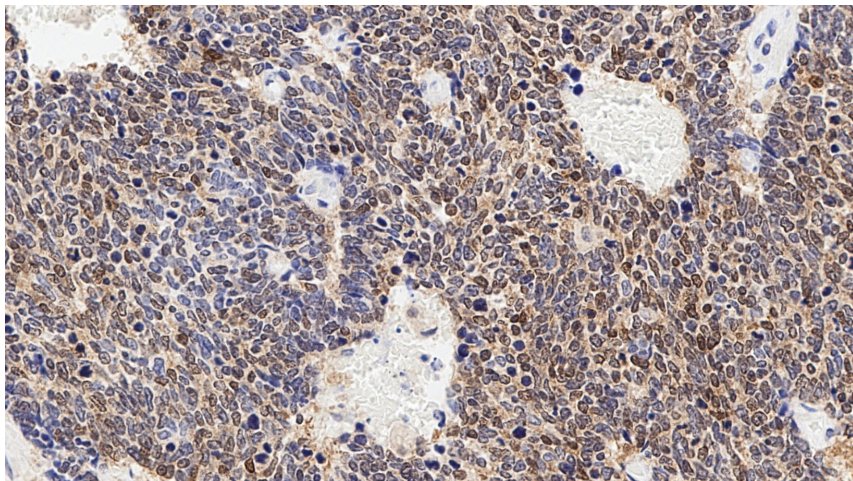
Calretinin (CALB2) Mouse Monoclonal Antibody [Clone ID: CAL6]

Product data:

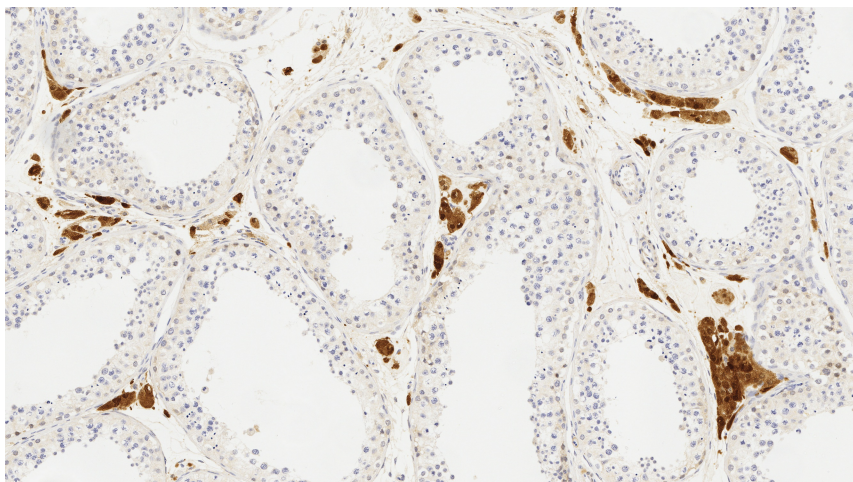
Product Type:	Primary Antibodies
Clone Name:	CAL6
Applications:	IHC
Recommended Dilution:	1:200
Reactivity:	Human
Host:	Mouse
Isotype:	IgG2a
Clonality:	Monoclonal
Immunogen:	Prokaryotic recombinant protein corresponding to the entire human calretinin molecule
Specificity:	Human calretinin molecule
Formulation:	Liquid tissue culture supernatant containing sodium azide as a preservative
Conjugation:	Unconjugated
Storage:	Store at 2-8°C
Stability:	12 months
Gene Name:	calbindin 2
Database Link:	Entrez Gene 794 Human P22676
Background:	Calretinin is a calcium-binding protein of 29 kD that is a member of the family of so-called EF-hand proteins that also includes S-100 proteins. Calretinin is reported to be abundantly expressed in neurons. Outside the nervous system, calretinin is reported to be expressed in a range of cell types including mesothelial cells, steroid producing cells, (for example adrenal cortical cells, Leydig cells, ovarian theca interna cells, Sertoli cells, some neuroendocrine cells, eccrine sweat glands) and other cell types.
Synonyms:	CAB29; CAL2; calretinin; CR



[View online »](#)

Product images:

Human small cell lung carcinoma:
immunohistochemical staining for Calretinin.
Calretinin: clone CAL6



Human small cell lung carcinoma:
immunohistochemical staining for Calretinin.
Calretinin: clone CAL6