

Product datasheet for **TA355224**

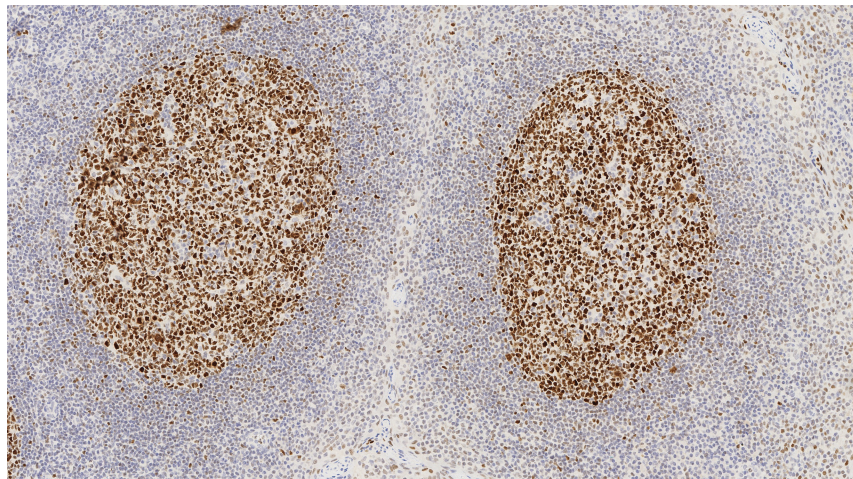
bcl 6 (BCL6) Mouse Monoclonal Antibody [Clone ID: LN22]

Product data:

Product Type:	Primary Antibodies
Clone Name:	LN22
Applications:	IHC
Recommended Dilution:	1:60
Reactivity:	Human
Host:	Mouse
Isotype:	IgG2b
Clonality:	Monoclonal
Immunogen:	Prokaryotic recombinant protein containing 1–350 amino acids of the N-terminus of the Bcl-6 human oncoprotein molecule
Specificity:	Human Bcl-6 oncoprotein
Formulation:	Liquid tissue culture supernatant containing sodium azide as a preservative
Conjugation:	Unconjugated
Storage:	Store at 2-8°C
Stability:	12 months
Gene Name:	B-cell CLL/lymphoma 6
Database Link:	Entrez Gene 604 Human P41182
Background:	Bcl-6 is a proto-oncogene that encodes a Kruppel-type zinc-finger protein of 95 kD and shares homology with other transcription factors. Bcl-6 protein is mainly expressed in normal germinal center B cells and related lymphomas. It has been shown that the Bcl-6 proto-oncogene is involved in chromosome rearrangements at 3q27 in non-Hodgkin's lymphomas and Bcl-6 rearrangements have also been detected in 33-45% of diffuse large B cell lymphomas. Immunohistochemistry has been reported to show the Bcl-6 gene product to be detectable in follicular lymphomas, diffuse large B cell lymphomas, Burkitt's lymphomas and in nodular, lymphocyte predominant Hodgkin's disease.
Synonyms:	BCL-5; BCL-6; BCL5; BCL6A; LAZ3; ZBTB27; ZNF51



[View online »](#)

Product images:

Human diffuse large B cell lymphoma: The majority of neoplastic cells show a moderate to strong nuclear staining reaction. Bcl-6: clone LN22