

Product datasheet for **TA355219**

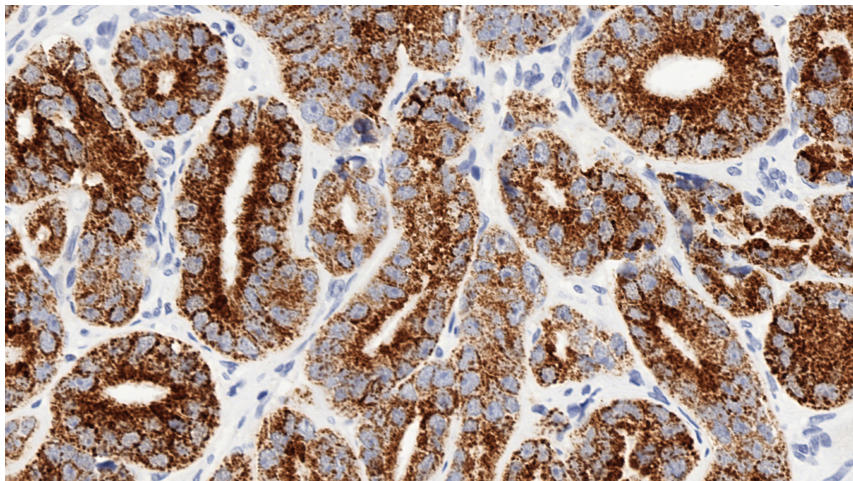
AMACR Mouse Monoclonal Antibody [Clone ID: EPMU1]

Product data:

Product Type:	Primary Antibodies
Clone Name:	EPMU1
Applications:	IHC
Recommended Dilution:	1:200
Reactivity:	Human
Host:	Mouse
Isotype:	IgG1
Clonality:	Monoclonal
Immunogen:	Prokaryotic recombinant protein corresponding to 382 amino acids of the human alpha-methylacyl-CoA racemase molecule
Specificity:	Human alpha-methylacyl-CoA racemase
Formulation:	Liquid tissue culture supernatant containing 15 mM sodium azide as a preservative
Conjugation:	Unconjugated
Storage:	Store at 2-8°C
Stability:	12 months
Gene Name:	alpha-methylacyl-CoA racemase
Database Link:	Entrez Gene 23600 Human Q9UHK6
Background:	Alpha-methylacyl-CoA racemase (AMACR), also known as p504s, is a mitochondrial and peroxisomal enzyme that is involved in bile acid biosynthesis and beta-oxidation of branched-chain fatty acids. AMACR is essential in lipid metabolism, and is expressed in normal liver (hepatocytes), kidney (tubular epithelial cells) and gall bladder (epithelial cells). Expression has also been found in lung (bronchial epithelial cells) and colon (colonic surface epithelium). Expression is granular and cytoplasmic. AMACR expression can also be found in hepatocellular carcinoma and kidney carcinoma. Past studies have also shown that AMACR is expressed in various colon carcinomas (well, moderately and poorly differentiated) and over expressed in prostate carcinoma.
Synonyms:	CBAS4; RACE; RM



[View online »](#)

Product images:

Human prostatic adenocarcinoma:
immunohistochemical staining for AMACR. Note
the characteristic granular cytoplasmic staining of
malignant cells. AMACR: clone EPMU1