

## Product datasheet for **TA355218**

### alpha Synuclein (SNCA) Mouse Monoclonal Antibody [Clone ID: KM51]

#### Product data:

Product Type:	Primary Antibodies
Clone Name:	KM51
Applications:	IHC
Recommended Dilution:	1:20–1:40
Reactivity:	Human
Host:	Mouse
Isotype:	IgG1
Clonality:	Monoclonal
Immunogen:	Prokaryotic recombinant protein corresponding to the majority of the full length alpha-synuclein molecule
Specificity:	Alpha-synuclein, also known as the non-AB component of Alzheimer's disease amyloid precursor protein (NCAP). Does not crossreact with beta-synuclein
Formulation:	Liquid tissue culture supernatant containing 15 mM sodium azide as a preservative
Conjugation:	Unconjugated
Storage:	Store at 2-8°C
Stability:	12 months
Gene Name:	synuclein alpha
Database Link:	<a href="#">Entrez Gene 6622 Human P37840</a>

[View online »](#)

**Background:**

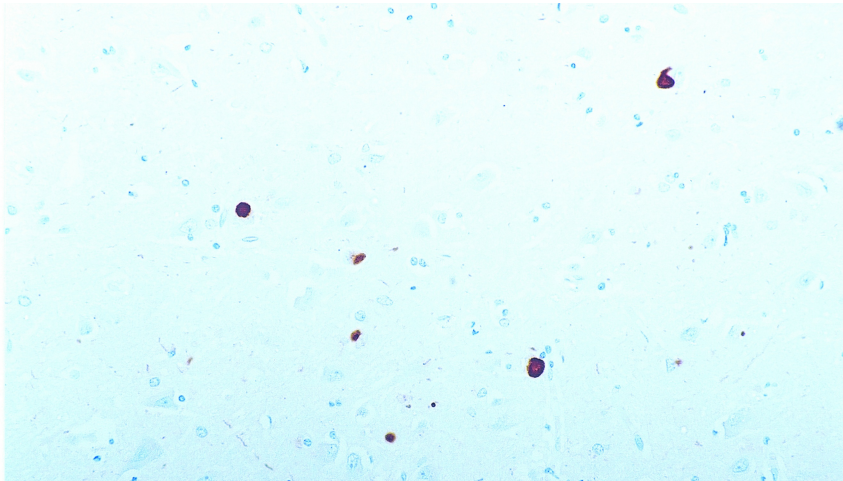
Alpha-synuclein is a protein of 140 amino acids and a member of the synuclein family. It shares 61% sequence homology with beta-synuclein and is highly conserved between vertebrate species. It does not possess a signal sequence suggesting that it is an intracellular protein. All synucleins have an unusual organization based around the eleven residue repeating motif and an alpha-helical secondary structure resembling those found in the lipid-binding domain of exchangeable apolipoproteins, including Apo E. This homology suggests a direct interaction of alpha-synuclein with membranes consistent with its affinity for synaptosomes.

The function of alpha-synuclein may be to carry a target protein to the inner membrane of nerve terminals or to the outer surface of synaptic vesicles. Western Blot analyses of highly purified Lewy bodies from Lewy body dementia brain material has shown full-length, partially truncated and insoluble aggregates of alpha-synuclein.

Alpha-synuclein may be implicated in the formation of Lewy bodies and the selective degeneration of neurons in sporadic Parkinson's disease and Lewy body dementia.

**Synonyms:**

alpha-synuclein; MGC110988; NACP; OTTHUMP00000161559; OTTHUMP00000161561; PARK1; PARK4; PD1

**Product images:**


Human brain, Lewy body dementia: immunohistochemical staining for alpha-synuclein. Note staining of alpha-synuclein-containing Lewy bodies. Alpha-Synuclein: clone KM51