

Product datasheet for **TA355216**

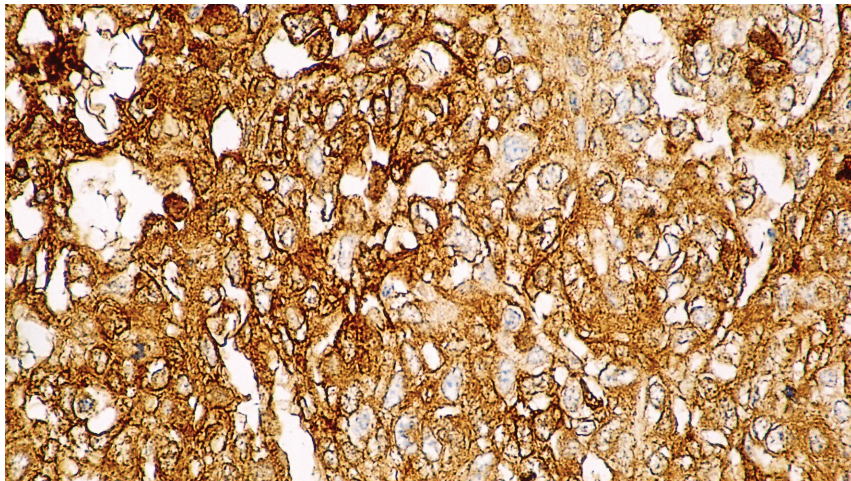
alpha 1 Fetoprotein (AFP) Mouse Monoclonal Antibody [Clone ID: C3]

Product data:

Product Type:	Primary Antibodies
Clone Name:	C3
Applications:	IHC
Recommended Dilution:	1:100
Reactivity:	Human, Dog, Pig
Host:	Mouse
Isotype:	IgG2a
Clonality:	Monoclonal
Immunogen:	Affinity isolated alpha fetoprotein from serum of a hepatoma patient.
Specificity:	Human alpha fetoprotein. Also reacts with pig and dog alpha fetoprotein. Does not react with mouse, rat, cat or cow alpha fetoprotein.
Formulation:	Liquid tissue culture supernatant containing sodium azide as a preservative
Conjugation:	Unconjugated
Storage:	Store at 2-8°C
Stability:	12 months
Gene Name:	alpha fetoprotein
Database Link:	Entrez Gene 174 Human P02771
Background:	<p>Alpha fetoprotein (AFP) is an oncofetal antigen of 70 kD found in body fluids, which if detected in high concentrations has clinical implications.</p> <p>AFP is expressed in fetal liver but is not present under normal circumstances in healthy adult tissues. It is reported to be expressed in a proportion of germ cell tumors, with high frequency in yolk sac tumors.</p>
Synonyms:	alpha-1-fetoprotein; Alpha-fetoglobulin; alpha-fetoprotein; FETA; HP; HPAFP; OTTHUMP00000160480



[View online »](#)

Product images:

Human fetal liver: immunohistochemical staining for Alpha Fetoprotein. Alpha Fetoprotein: clone C3